



ST. CLAIR CATHOLIC
DISTRICT SCHOOL BOARD
Lighting the Way ~ Rejoicing in Our Journey

OUTDOOR LEARNING ENVIRONMENT TENDER

INSTRUCTIONS TO BIDDERS

Date: May 29, 2015

BID PACKAGE #: 634-CP1508
BID PACKAGE #: 623-CP1509

1. BID SUBMISSION

The St. Clair Catholic District School Board (Board) is seeking a contractor to provide equipment & installation of Outdoor Learning Environment at three facilities in Sarnia-Lambton.

Bids from invited bidders shall be submitted on the Bid Form provided and submitted in an envelope clearly marked:

Bid Package : Outdoor Learning Environment Tender

The envelope shall be sealed and delivered to: St. Clair Catholic District School Board
245 Tecumseh St.
Sarnia, ON
N7T 2L1

Attention: Mr. Tony Prizio, Procurement Specialist

Bids will be accepted at the SCCDSB Facilities Services office not later than **June 11, 2015 @ 2:00:00 p.m.** (No extensions to Bid Closing date are anticipated. Bidders are encouraged to act immediately to prepare their submissions!)

Bids shall be filled out in ink or typed, signed in longhand by a duly authorized company official (having authority to bind) and sealed with a company corporate seal. One original of the fully completed Bid Form must be submitted. **Failure to provide all of the requested information on the Bid Form may result in disqualification of the bid.**

Unsolicited bids will not be accepted.

Bids by telephone, fax or email will **not** be accepted.

After bid closing, sealed envelopes will be opened by the Board's Procurement Specialist (Tony Prizio) and a representative from Corporate Services' department.

2. SCOPE OF WORK

The Instructions to Bidders identifies the work to be performed in the Contract and takes priority if there is a conflict within the Bid Documents. **Refer to Scope of Work in Appendix A for detailed description of work to be carried out by the successful proponent.**

3. BID DOCUMENTS

The following Bid Documents form the basis of this Bid Package and shall be examined by bidders:

- 3.1 Instructions to Bidders dated May 29, 2015
- 3.2 Bid Form dated May 29, 2015.
- 3.3 **Ron Koudys Landscape Architects Quotation Forms for Sacred Heart (Sarnia) & St. Joseph (Corunna).**
- 3.4 **Prime Contract** – Board will issue a purchase order to the successful proponent(s). The Board assumes no responsibility for the bidder's failure to examine **all** of the Bid Documents.



INSTRUCTIONS TO BIDDERS

Date: May 29, 2015

BID PACKAGE #: 634-CP1508

BID PACKAGE #: 623-CP1509

4. **BID ACCEPTANCE**

It shall be understood by all bidders, that the bid shall be valid and subject to acceptance by the Board, and that no adjustments shall be made to the Bid amounts for a period of up to and including sixty (60) days from the Bid Closing Date.

The Board reserves the right to determine the successful bidder by any combination of base bid, separate prices, requested alternate prices and voluntary alternate prices submitted with the bid. The Board is not obligated to select the bid with the lowest price and may cancel a bid prior to award without liability to any bidder.

The successful bidder shall be required to enter into a formal contract with the Board, which will include the terms and conditions of the Instructions to Bidders, Bid Form, and all other applicable documents.

5. **AWARD**

The Board has the right to reject any or all bids. The lowest Bid will not necessarily be accepted. The invitation to bid does not constitute an offer by the Contractor to enter into a contract.

This contract will be awarded on a per location basis or on the best cost of various groupings. The groupings will be determined by the Board. Each bidder agrees to the award on this basis.

Contractor may submit pricing for either all schools or just schools of choice.

6. **PAYMENT**

The Board shall pay within forty-five (45) days after receipt of the invoices which are received and approved by the Board.

7. **TAXES**

Include in Bid all Taxes and all other Customs Duties and Excise Taxes which are in force at Bid date as detailed in General Conditions. Harmonized Sales Tax (H.S.T.) is **not** to be included in the bid. The H.S.T. amount and the Bidder's **H.S.T. Registration Number** are to be indicated on the Bid Form in the spaces provided.

8. **ADDENDA**

Bidders finding discrepancies, ambiguities or omissions in the bid documents or having doubt as to the meaning or intent thereof, shall immediately notify the Procurement Specialist who may issue instructions and/or clarifications by Addendum to all Bidders. Bidders may also, during the Bidding Period, be advised by Addendum of any additions, deletions or alterations to bid documents. All such Addenda shall become part of the Bid Documents.

All questions to be addressed in writing to: Mr. Tony Prizio, Procurement Specialist
St. Clair Catholic District School Board
Fax 519.627.8230 or
E-mail: tony.prizio@st-clair.net
Copy: patsy.mckenzie@st-clair.net
No later than 24 hours prior to bid closing date.



INSTRUCTIONS TO BIDDERS

Date: May 29, 2015

BID PACKAGE #: 634-CP1508

BID PACKAGE #: 623-CP1509

9. CHANGE NOTICES, CHANGE ORDERS

The following fee percentage and overhead charges shall be applied to additional work ordered by the Board:

- For work carried out by the Contractor's own forces – 10% Overhead & Profit
- For work involving a subcontractor, the subcontractor may charge a maximum 10% fee. The General Contractor may charge a maximum of 5% in addition to subcontractor's fee.

10. BONDING

On bids exceeding \$100,000.00, submit with the Bid an Agreement to Bond for a 50% Performance Bond, and a 50% Labour & Material Payment Bond. Upon request, the successful Bidder will be required to provide the 50% Performance Bond and 50% Labour and Material Payment Bond from a bonding company acceptable to the Board. The cost of the bond is not to be included in the bid sum, the amount of which is to be identified on the Bid Form.

11. VOLUNTARY ALTERNATE AND SEPARATE PRICES

The bid amounts are to be based on the bid documents. Where there is any conflict within the bid documents, the bid amount shall include the higher cost alternative. Alternative proposals are encouraged and must be identified in the bid. Submit complete information including any impact on schedule to allow a full evaluation of the proposal including, as applicable, any particulars in which the alternate proposal is at variance with or unable to meet the specifications. Note also any impact on other trades if the alternative is accepted. Alternative proposals may be made without limitation, including for items specified as single sourced.

12. EXAMINATION OF SITE & SITE VISIT

In submitting a bid, it will be assumed that the bidders have carefully examined the site and surrounding properties of the work and have informed themselves as to the existing conditions, access, storage areas and limitations, and have included in the bid price the complete cost of the work contemplated by the drawings and specifications and other bid documents.

A site visit has been scheduled for **June 4, 2015 at 10:00a.m.** Interested parties should meet at the office of **St. Joseph Catholic School, 535 Birchbank Dr., Corunna**. Following the St. Joseph (Corunna) site visit we will proceed to Sacred Heart Catholic School, 1411 Lecaron Avenue, Sarnia and then to St. Anne Catholic School, 1000 Rapids Parkway in Sarnia. The contact for this site visit is Gabe Lacroix (Tel: 519-330-9793).

13. TIMING OF PROJECT

A purchase order will be issued by June 19, 2015.

Work on **ALL** sites must take place during the period of June 29 and be completed no later than August 21, 2015.

14. PROJECT SPECIFIC REQUIREMENTS

Contractor's employees shall use only those toilet and washroom facilities designated by the Owner or provide their own facilities. In the event that the contractor elects to use Board facility washrooms, the contractor will be responsible for the maintenance, stocking and cleaning of the designated washroom. The designated washroom shall be returned to the Board in the same condition as received by the



INSTRUCTIONS TO BIDDERS

Date: May 29, 2015

BID PACKAGE #: 634-CP1508

BID PACKAGE #: 623-CP1509

contractor. Any and all damages to facilities while under the control of the contractor shall be repaired at the contractor's cost.

Please be advised that the Owner has a No Smoking Requirement on the Owners' property. Contractors are requested to ensure that employees and suppliers are advised of the Requirement. Contractor shall remove rubbish and debris from the site on a daily basis or as directed by the Board. On completion of the work, all debris shall be removed; the floor shall be thoroughly cleaned and swept; the site shall be left in a tidy condition (construction clean). Do not use the Board's equipment or facilities for cleaning or for any reason.

15. INSURANCE

Contractor must maintain, at the Contractor's expense for the entire term of the Contract or as otherwise required, all insurance as set out below:

- The successful Contractor shall provide the Board with proof of insurance for Comprehensive General Liability and Property Damage with a limit of not less than \$2,000,000.00 (two million dollars) inclusive prior to commencing work.
- The successful Contractor shall provide the Board with proof of insurance for Motor Vehicle Public Liability and Property Insurance on all owned and rented equipment with a limit of not less than **\$2,000,000.00 (two million dollars)** inclusive prior to commencing work.
- The Contractor agrees to indemnify, hold harmless, and defend the Board from and against any and all liability for loss, damage and expense, which the Board may suffer or for which the Board may be held liable by reason of injury (including death) or damage to any property arising out of negligence on the party of the proponent or any of its representatives or employees by way of ownership or operation of an automobile.
- The successful Contractor shall provide the Board with a complete certified copy of all policies.
- The successful Contractor must name the St. Clair Catholic District School Board as additional insured on their insurance policies.

16. WORKPLACE SAFETY INSURANCE BOARD (WSIB)

Contractor must furnish a copy of Workplace Safety and Insurance Board Clearance Certificate of good standing, "Section 748" of the Workplace Safety and Insurance Act with its bid documents.

17. PERMITS

The Board will apply and pay for the building permit. The Contractor shall apply for and include costs for any other permits and approvals required for the completion of their work.

18. MEETINGS

A Post Bid Meeting may be convened and chaired by the Board who will invite Contractor and his major Subcontractors to review the Contract Documents and Bid submitted. This meeting will be prior to the Board issuing a Letter of Intent or Contract. This meeting does not constitute or infer any contract award to the proposed contractor or any other contractor, nor that will the project proceed.

During the course of Work, scheduled progress meetings may be required at the call of the Project Leader.



ST. CLAIR CATHOLIC
DISTRICT SCHOOL BOARD

Lighting the Way ~ Rejoicing in Our Journey

OUTDOOR LEARNING ENVIRONMENT TENDER

INSTRUCTIONS TO BIDDERS

Date: May 29, 2015

BID PACKAGE #: 634-CP1508

BID PACKAGE #: 623-CP1509

19. GUARANTEE

The guarantee shall be for a period of 1 year from and after completion of the entire job and acceptance thereof by the Board unless a different period of time is specified with the Board's approval. The Contractor's guarantee shall cover all work under the Contract whether or not any portion or trade has been sublet.

The Contractor agrees to correct promptly, at the Contractor's own expense, defects or deficiencies in the Work which appear prior to and during the period of guarantee, or such longer periods as may be specified for certain products or work.

If the Contractor fails to make any replacements or repairs required hereunder, after notice from the Board and reasonable opportunity to do so, the Board may have such work done at Contractor's expense, including all necessary labour costs in connection therewith. Board shall inform Contractor in advance of the approximate cost of such work to be done by the Board.

20. SCHEDULE

The Contractor will be required to perform the work in accordance with the Schedule dates provided in 13. Timing of Project. Ordering of major and long delivery items shall begin immediately upon successful bidder's receipt of contract award. The Contractor will provide a construction schedule within five (5) days of being awarded the project.

Time is of the essence. Bidders are to include adequate manpower, overtime and shift work necessary to meet or improve the schedule, and to make up any time lost to weather or normal delays. Include travel, room and board costs for out of town workers, shop overtime and other premiums to expedite material and equipment, shipping premiums and any incentive costs required to meet the schedule.

21. CONTRACTED SERVICES PROGRAM

Contractors performing work on Board property must complete the Contracted Services Program. This program has three basic components that **must** be met before the bid is awarded. Contractors who cannot meet the minimum requirements of this program will not be awarded this tender. Program information can be found on the Board's web site at www.st-clair.net or through the Board contact identified previously in this document.

22. HEALTH and SAFETY

The Occupational Health and Safety Act describes the responsibilities of an employer. The Board requires Contractors to maintain procedures, training, and enforcement so that the responsibilities are carried out in the workplace. The Contractor shall abide by and strictly adhere to the regulations and conditions set out and laid down by the most current versions of the Occupational Health and Safety Act. All staff employed or hired by the Contractor and working on the Board's premise **MUST** be trained in WHMIS in accordance with Occupational Health and Safety Act and Regulations. They **MUST** adhere to all of the Board's Health and Safety Procedures and Guidelines and to Municipal By-Laws.

Contractor will submit proof of its health and safety program, procedures and training as detailed above upon request by the Board.

The Contractor shall appoint a Competent Person as the Supervisor of this project. The Competent Person shall be as defined in Section 1 of the Occupational Health and Safety Act.



ST. CLAIR CATHOLIC
DISTRICT SCHOOL BOARD

Lighting the Way ~ Rejoicing in Our Journey

OUTDOOR LEARNING ENVIRONMENT TENDER

INSTRUCTIONS TO BIDDERS

Date: May 29, 2015

BID PACKAGE #: 634-CP1508

BID PACKAGE #: 623-CP1509

The successful Contractor shall conform to the Ontario "Occupational Health and Safety Act" and all regulations made under said act and assume full responsibility for contraventions of same.

All workplace injuries or accidents on Board property MUST be reported by the Contractor to the Board's representative within 24 hours.

Any workplace injury that is defined under the Occupational Health and Safety Act as a "Critical Injury" must be reported to the Board's representative IMMEDIATELY.

23. SAFE SCHOOL PROCEDURES

Contractor's staff is required to report to the main office of each school during regular school hours and notify the school office staff of the purpose of the visit. The Contractor is required to adhere to all school specific procedures if applicable.

It is the responsibility of the Contractor's staff to sign in and sign out of the Log Book, which is located in the main office area, while performing their duties.

The following information must be recorded in a legible manner:

- Date
- Company Name
- Employee Name
- Employee Signature
- Reason for Visit
- Time Entering Building
- Time Leaving Building

24. PARKING

Contractors must park within the designated areas and allow for provisions to and from the designated parking area onto the job site.

END OF INSTRUCTIONS TO BIDDERS



ST. CLAIR CATHOLIC
DISTRICT SCHOOL BOARD
Lighting the Way ~ Rejoicing in Our Journey

OUTDOOR LEARNING ENVIRONMENT TENDER

BID FORM

Date: May 29, 2015

BID PACKAGE #: 634-CP1508

BID PACKAGE #: 623-CP1509

COMPANY NAME: _____

TO: St. Clair Catholic District School Board
245 Tecumseh St.
Sarnia, ON
N7T 2L1

Attention: **Mr. Tony Prizio**

Contractor may submit pricing for either all schools or just schools of choice.

This contract will be awarded on a per location basis or on the best cost of various groupings. The groupings will be determined by the SCCDSB. Each bidder agrees to the award on this basis.

Tie bids received will be determined by a coin flip. The flip will be done by the Procurement Specialist.

The Drawings, Specifications and other Contract Documents for this Project have been examined, as well as the premises and job site conditions affecting the work. We the undersigned hereby offer to complete the work in accordance with the Contract Documents for the following price in Canadian funds **EXCLUDING HST**.

Project	Description	Amount (Does Not Include HST)	HST
623	Sacred Heart (Sarnia) – RKLA Bid Form	\$	
627	St. Anne (Sarnia) – SCCDSB Bid Form	\$	
634	St. Joseph (Corunna) – RKLA Bid Form	\$	
	TOTAL	\$	

Contract Price Fixed: Note that subject to changes in the Contract Price made in accordance with the Contract, the Contract Price is fixed and constitutes the total compensation payable to the Contractor for providing the work. The Contract Price includes all labour, material, equipment, freight, taxes (**excluding HST**), currency exchange costs, insurances required, and **all** other costs and expenses of any kind respecting the work and materials to be provided.

In lawful money of Canada (**H.S.T. excluded**) if notified of the acceptance of the offer within sixty (60) days from the time set for the opening of bids.

We recognize the right of St. Clair Catholic District School Board to accept any bid at the prices submitted or to reject any or all bids.

This Bid includes the work described in:



ST. CLAIR CATHOLIC
DISTRICT SCHOOL BOARD
Lighting the Way ~ Rejoicing in Our Journey

OUTDOOR LEARNING ENVIRONMENT TENDER

BID FORM

BID PACKAGE #: 634-CP1508

BID PACKAGE #: 623-CP1509

Date: May 29, 2015

ADDENDA No.: _____ Dated _____
 _____ Dated _____

BONDS:

We submit an Agreement to bond for 50% Performance Bond and 50% labour and material payment bond. The cost of the Bond is not included in the Bid Sum.
 Premium for 50% Performance and 50% labour and material Bond.

Add to bid amount \$ _____ N/A _____ (H.S.T. Excluded).

UNIT PRICES:

The following unit prices are offered as full compensation for materials, equipment, labour, overheads, profits and taxes, exclusive of H.S.T. for completion of the work described and are to be used when contract adjustments are made on a unit price basis. Unit rates are to be applied to the net difference for each category.

Description	Add	Remove
Armor Stone (lin.ft) – St. Anne (Sarnia)	\$ _____	\$ _____

Contractors to fill-out Ron Koudys Landscape Architects Unit Price Quotation Form for Sacred Heart (Sarnia) & St. Joseph (Corunna) – see scope of work section.

LABOUR RATES:

The following labour rates are to be used for items not covered by unit prices. Rates include all benefits, overhead/profit and taxes, excluding H.S.T.

Description of Labour

Supervisor per hour \$ _____
 Labourer/Installer per hour \$ _____

EQUIPMENT RATES:

The following equipment rates are to be used for items not covered by unit prices. Rates include operator, fuel, overhead/profit and taxes, excluding H.S.T.

Description of Equipment

_____ per hour \$ _____



ST. CLAIR CATHOLIC
DISTRICT SCHOOL BOARD
Lighting the Way ~ Rejoicing in Our Journey

OUTDOOR LEARNING ENVIRONMENT TENDER

BID FORM

Date: May 29, 2015

BID PACKAGE #: 634-CP1508

BID PACKAGE #: 623-CP1509

LIST OF SUBCONTRACTORS:

SCHEDULE:

Work schedule to be confirmed with Gabe Lacroix 519-330-9793 or Tony Montanino 519.381.1777 after contract has been awarded.

H.S.T. REGISTRATION:

Bidder's H.S.T. Registration Number is: _____

CONTRACT

We hereby agree, if notified of the acceptance of this Bid within the specified time of 60 days, to execute a contract for St. Clair Catholic District School Board by issuance of a purchase order between Owner and Contractor.

Executed this _____ day of _____, 2015.

Company Name: _____

Address: _____

Telephone Number: _____

Signature of authorized representative: _____

Name & Title (please print or type): _____

(END OF BID FORM)



ST. CLAIR CATHOLIC
DISTRICT SCHOOL BOARD
Lighting the Way ~ Rejoicing in Our Journey

OUTDOOR LEARNING ENVIRONMENT TENDER

**APPENDIX A – SPECIFICATIONS,
DRAWINGS & SCOPE OF WORK**

Date: May 29, 2015

BID PACKAGE #: 634-CP1508

BID PACKAGE #: 623-CP1509

SPECIFICATIONS, DRAWINGS & SCOPE OF WORK

The Specifications, Drawings & Scope of Work establish the work to be performed in the contract and take priority regarding the division of work between contracts only if there is a conflict within the bid documents.

Provide all labour, material, equipment and services to install the Outdoor Learning Environment at the schools identified below. Attached drawings and quotation forms for the three schools listed below:

Facility Name	Address		
Sacred Heart Catholic School	1411 Lecaron Avenue	Sarnia	N7V 3J1
St. Anne Catholic School	1000 Rapids Parkway	Sarnia	N7S 6K3
St. Joseph Catholic School	535 Birchbank Drive	Corunna	N0N 1G0

(END OF SCOPE OF WORK)



SCCDSB – OUTDOOR LEARNING ENVIRONMENT

Project # 623-CP1509

SCHOOL: SACRED HEART C.S. - SARNIA
1411 Lecaron Avenue, Sarnia, ON N7V 3J1

QUOTATION CLOSES: Thursday, June 11, 2015 @ 2:00PM

ALL QUOTATIONS TO BE HAND DELIVERED IN A SEALED ENVELOPE TO:

QUOTATIONS QUOTED OVER THE PHONE WILL NOT BE ACCEPTED.

QUOTATIONS TO CONFORM TO THE ENCLOSED PRICING SCHEDULE.

CONTRACTOR TO MAKE SELF FAMILIAR WITH SITE(S) AND MAKE AT LEAST ONE SITE VISIT
PRIOR TO BIDDING ON THIS QUOTATION PACKAGE.

BID SUBMITTED BY: _____

DATE OF SITE VISIT: _____

SUBCONTRACTORS TO BE USED AND THEIR SCOPE OF WORK:

AWARDED PROJECTS TO BE COMPLETED BY: August 21, 2015

NUMBER OF WORKING DAYS REQUIRED TO COMPLETE PROJECT: _____

QUOTATION PRICE (excluding HST): _____

CONTRACTOR RESPONSIBLE FOR **ALL PERMITS**.
CONTRACTOR RESPONSIBLE FOR **ALL UTILITY LOCATES**.
ALL WORKMANSHIP TO BE GUARANTEED FOR **ONE YEAR**.

ENSURE POSITIVE DRAINAGE IN ALL AREAS.
REPORT ALL **DISCREPANCIES AT TIME OF QUOTATION**.
ERRORS OR OMISSIONS WILL BE **THE RESPONSIBILITY OF THE CONTRACTOR**.

NOTES:

LOWEST PRICE NOT ALWAYS AWARDED PROJECT.
INSTALL ALL MATERIAL TO MANUFACTURER'S SPECIFICATIONS

ITEM	DESCRIPTION	UNIT	EST. QTY	UNIT PRICE	TOTAL PRICE
L-2 FDK LANDSCAPE PLAN					
1.0	REMOVALS				
1.1	<u>Site Preparation:</u> Remove and dispose offsite all existing sod.	sq ft	1850	\$ _____	\$ _____
1.2	<u>Site Preparation:</u> Remove and dispose offsite existing pea gravel between sod and relocated chain link fence. (Chain link fence is to be relocated by owner)	sq ft	600	\$ _____	\$ _____
1.3	<u>Site Preparation:</u> Saw cut, remove and dispose offsite existing asphalt as indicated on drawings.	sq ft	400	\$ _____	\$ _____
1.1 to 1.3 Sub-Total					\$ _____
2.0	PLANT MATERIAL				
Prices to include all excavation, topsoil and mulch as specified on the landscape plans. Excess material to be disposed off site.					
2.1	Red Maple (60mmcal)	ea	1	\$ _____	\$ _____
2.1 to 2.1 Sub-total					\$ _____
3.0	LANDSCAPE WORKS				
3.1	<u>Artificial Turf:</u> Supply and install artificial turf for mini soccer pitch. Ryamar Synthetic Grass Ltd. 1-88-924-7277. Contractor to install as per manufacturers recommendations and price to include required excavation, base material, drainage systems, and turf. Contractor to provide shop drawings.	sq ft	1000	\$ _____	\$ _____
3.2	<u>Mulch:</u> Supply and install 'Gro-Bark Fibertop' mulch at 6" thickness throughout yard where identified on landscape plans.	sq ft	2000	\$ _____	\$ _____
<i>Outdoor Classroom</i>					
3.3	<u>Chalkboard Frames:</u> Supply and install frames to support two owner supplied chalkboards.	ea	2	\$ _____	\$ _____
3.4	<u>Seating Logs & Tables:</u> Supply and install log seat and table sets. Set to include 1 large table log and 4 smaller chair logs. All log tops to be sanded smooth to Landscape Architects satisfaction. All wood products to be approved by Landscape Architect prior to installation.	ea	4	\$ _____	\$ _____

Performance Area

3.5	<u>Stage</u> : Install owner supplied 6'x8' stage.	lump	1	\$ _____	\$ _____
3.6	<u>Stage Seats</u> : Supply and install seating stools by stage. Refer to all attached details and specifications	ea	5	\$ _____	\$ _____
<i>Miscellaneous</i>					
3.7	<u>Seating Logs</u> : Supply and install horizontal seating logs as per landscape drawings. Refer to all attached details and specifications	ea	2	\$ _____	\$ _____
3.8	<u>Plexi Glass Art Wall Frame</u> : Supply and install plexi glass art wall frame. Refer to all details and specifications	ea	1	\$ _____	\$ _____
3.9	<u>Music Wall Frame</u> : Supply and install music wall frame. Refer to all details and specifications	ea	1	\$ _____	\$ _____

3.1 to 3.9 Sub-total \$ _____

Section 1 to 3 Total \$ _____

Contingency at 10% \$ _____

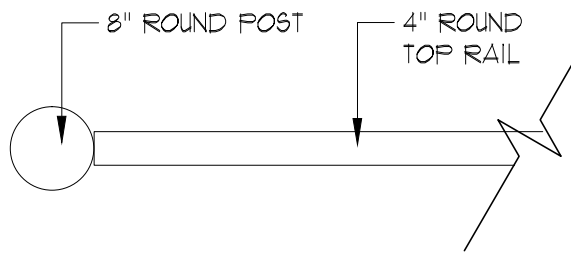
Sub-Total \$ _____

HST \$ _____

TOTAL \$ _____

ITEM	DESCRIPTION	UNIT	EST. QTY	UNIT PRICE	TOTAL PRICE
1.0	L-3 PRIMARY LANDSCAPE PLAN REMOVALS				
1.1	<u>Site Preparation:</u> Remove and dispose offsite any and all excavated material.	lump	1	\$ _____	\$ _____
					1.1 to 1.1 Sub-Total \$ _____
2.0	LANDSCAPE WORKS				
2.1	<u>Armor Stone:</u> Supply and install approx. 20' of armor stone as per plan on approved base. Refer to all attached details and specifications	lin ft	20	\$ _____	\$ _____
2.2	<u>Seating Logs:</u> Supply and install horizontal seating logs as per landscape drawings. Refer to all attached details and specifications	ea	2	\$ _____	\$ _____
					2.1 to 2.2 Sub-total \$ _____
					Section 1 to 2 Total \$ _____
					Contingency at 10% \$ _____
					Sub-Total \$ _____
					HST \$ _____
					TOTAL \$ _____

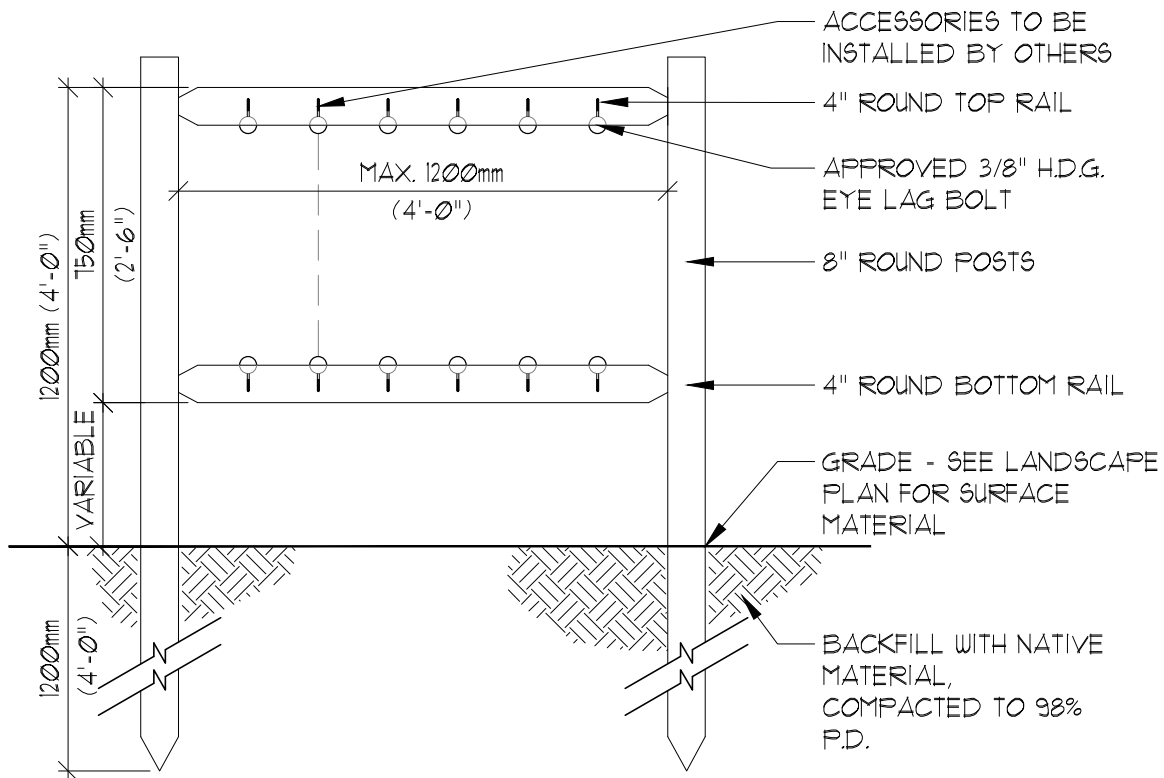
ITEM	DESCRIPTION	UNIT	EST. QTY	UNIT PRICE	TOTAL PRICE
1.0	L-4 NORTH YARD LANDSCAPE PLAN REMOVALS				
1.1	<u>Site Preparation:</u> Remove and dispose offsite any and all excavated material.	lump	1	\$ _____	\$ _____
				1.1 to 1.1 Sub-Total	\$ _____
2.0	LANDSCAPE WORKS				
2.1	<u>Armor Stone:</u> Supply and install approx. 24' of armor stone as per plan on approved base. Refer to all attached details and specifications	lin ft	24	\$ _____	\$ _____
2.2	<u>Seating Logs:</u> Supply and install horizontal seating logs as per landscape drawings. Refer to all attached details and specifications	ea	3	\$ _____	\$ _____
				2.1 to 2.2 Sub-total	\$ _____
					Section 1 to 2 Total
					\$ _____
					Contingency at 10%
					\$ _____
					Sub-Total
					\$ _____
					HST
					\$ _____
					TOTAL
					\$ _____



PLAN



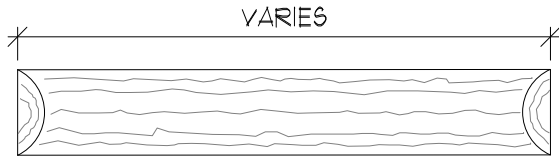
DESIRED FRAME LOOK
INSERTS WILL VARY



FRONT ELEVATION

NOTES:

1. CONTRACTOR TO REFER TO ALL SPECIFICATIONS.
2. CONTRACTOR TO SUPPLY AND INSTALL ALL MATERIAL AS NOTED ABOVE.
3. ALL HARDWARE TO BE HOT DIPPED GALVANIZED (H.D.G.) AS PER TVDSB SPECIFICATIONS AND CAN/CSA-Z614-14.
4. ALL WOOD TO BE LUMBER GRADE ASSOC. (N.L.G.A.) SELECTION TIGHT KNOT (S.T.K.) GRADE PRESSURE TREATED BOARD AS PER CAN/CSA-Z614-14.
5. ACTIVITY WALL FRAMES AS INDICATED ON PLANS ARE SCHEMATIC ONLY, EXACT PLACEMENT TO BE COMPLETED UNDER THE DIRECT SUPERVISION OF THE LANDSCAPE ARCHITECT.
6. CONTRACTOR TO ENSURE NO SHARP EDGES, CORNERS, OR OBJECTS.
7. CLIENT TO PROVIDE ADDITIONAL ACCESSORIES.
8. THE INTENDED USE OF THIS FEATURE IS TO BE PLAYED WITH BOTH FEET PLACED FIRMLY ON THE GROUND.

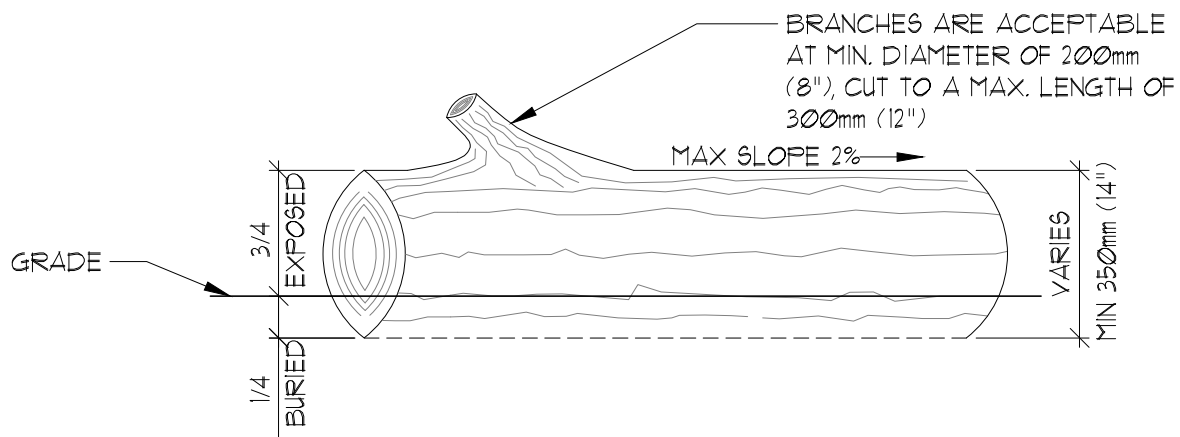


ARRANGEMENT OF LOGS
TO VARY - REFER TO
LANDSCAPE PLAN

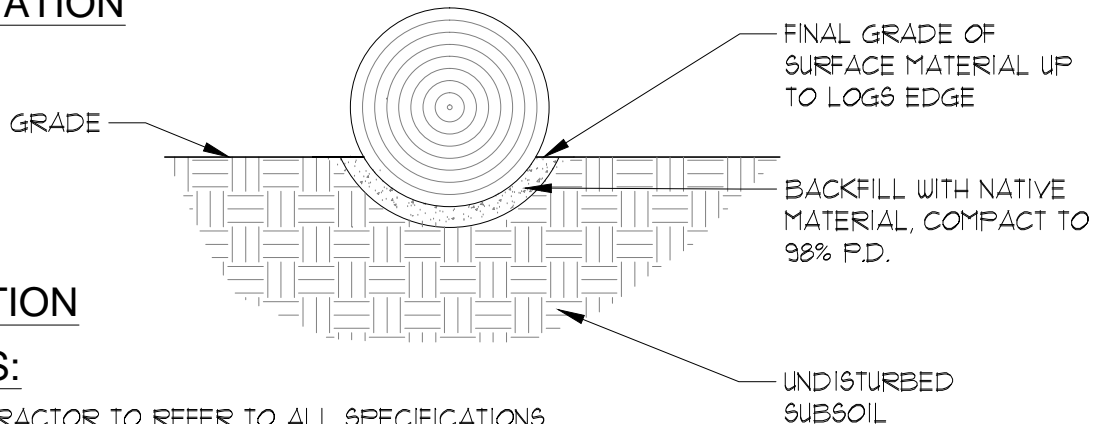


DESIRED LOOK.
NOTE: REFER TO LANDSCAPE PLANS FOR
SURROUNDING SURFACE REQUIREMENTS.

PLAN



ELEVATION



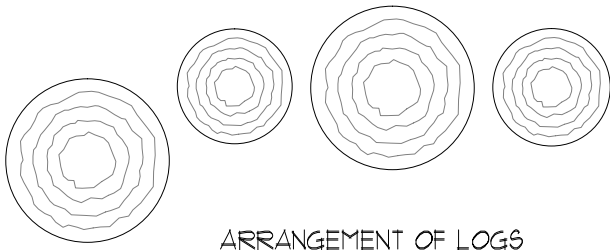
SECTION

NOTES:

1. CONTRACTOR TO REFER TO ALL SPECIFICATIONS.
2. CONTRACTOR TO SUPPLY AND INSTALL LARGE LOGS.
3. SEATING LOGS AS INDICATED ON PLANS ARE SCHEMATIC ONLY, EXACT PLACEMENT TO BE COMPLETED UNDER THE DIRECT SUPERVISION OF THE LANDSCAPE ARCHITECT.
4. LOGS WILL VARY IN LENGTH AND DIAMETER, WITH A MINIMUM DIAMETER OF 350mm (14").
5. LOGS ARE TO BE BURIED 1/4 BELOW GRADE TO PREVENT MOVEMENT.
6. CONTRACTOR TO ENSURE NO SHARP EDGES, CORNERS, OR OBJECTS.
7. LOGS TO BE OF OAK, ASH, HARD MAPLE OR BEECH SPECIES, OR APPROVED ALTERNATE.
8. ALL SELECTED LOGS TO BE APPROVED BY LANDSCAPE ARCHITECT.
9. ALL WORKMANSHIP TO BE IN ACCORDANCE TO CAN/CSA-Z614-14.
10. THE INTENDED USE OF THIS COMPONENT IS TO BE PLAYED WITH BOTH FEET PLACED FIRMLY ON THE GROUND.

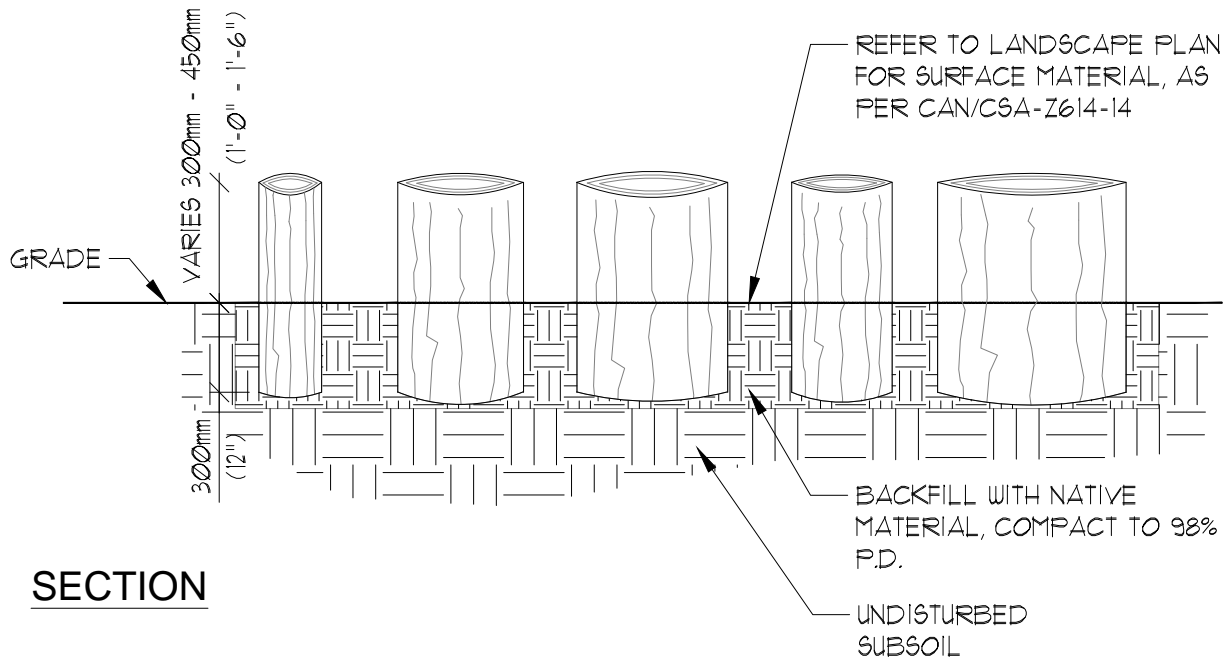
HORIZONTAL SEATING LOGS

N.T.S.



ARRANGEMENT OF LOGS
TO VARY - REFER TO
LANDSCAPE PLAN

PLAN



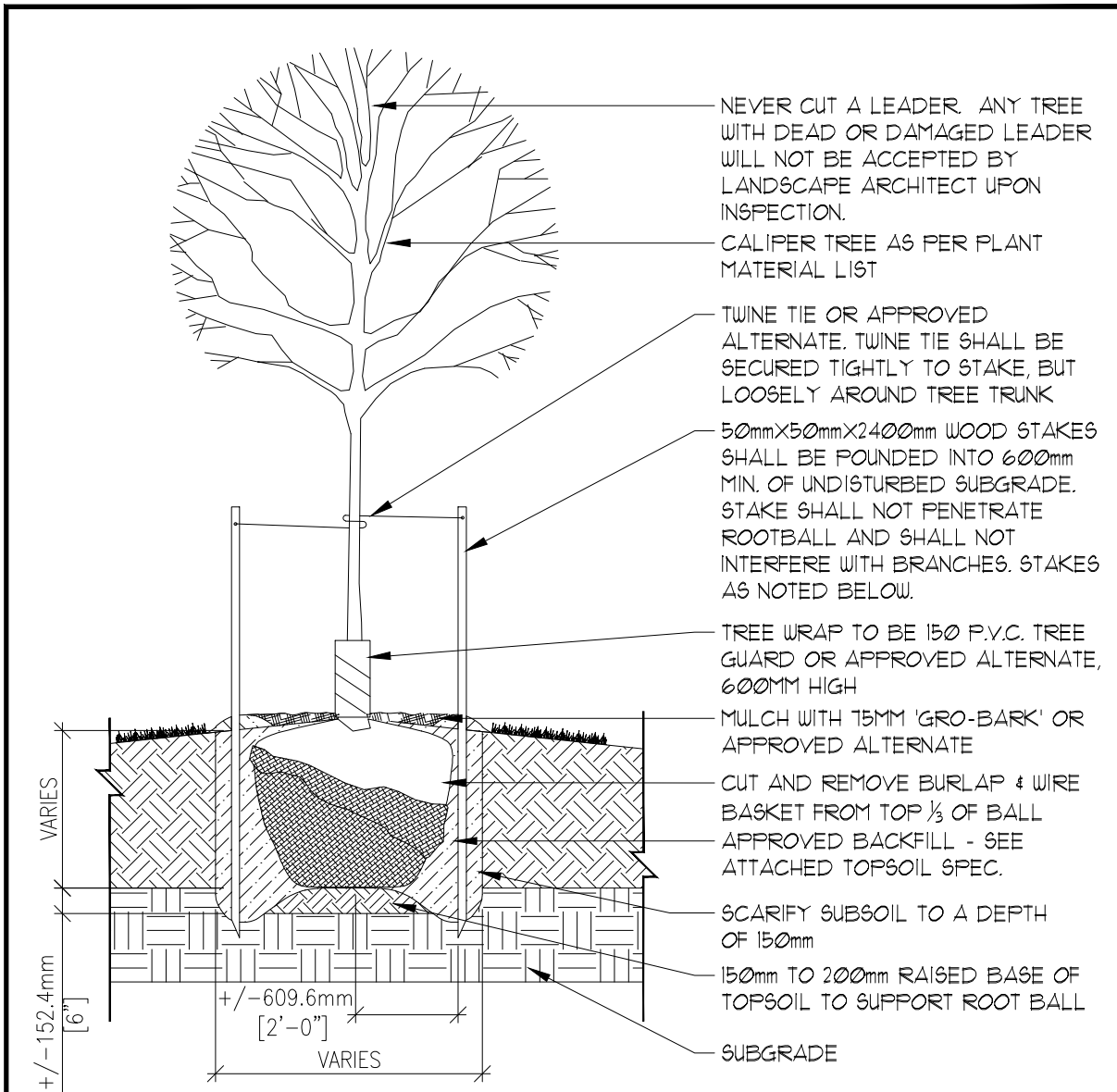
SECTION

NOTES:

1. CONTRACTOR TO REFER TO ALL SPECIFICATIONS.
2. CONTRACTOR TO SUPPLY AND INSTALL LOGS.
3. VERTICAL LOGS AS INDICATED ON PLANS ARE SCHEMATIC ONLY, EXACT PLACEMENT TO BE COMPLETED UNDER THE DIRECT SUPERVISION OF THE LANDSCAPE ARCHITECT.
4. LOGS WILL VARY IN LENGTH AND DIAMETER, WITH A MINIMUM DIAMETER OF 300mm (1'-0").
5. LOGS ARE TO BE BURIED 300mm (1'-0") BELOW GRADE.
6. LOGS TO BE CUT CLEANLY AND WITH A LEVEL SURFACE.
7. LOGS TO BE INSTALLED PLUMB AND VERTICAL.
8. CONTRACTOR TO ENSURE NO SHARP EDGES, CORNERS, OR OBJECTS.
9. LOGS TO BE OF OAK, ASH, HARD MAPLE OR BEECH SPECIES, OR APPROVED ALTERNATE.
10. ALL SELECTED LOGS TO BE APPROVED BY LANDSCAPE ARCHITECT.

UPRIGHT SEATING LOG

N.T.S.

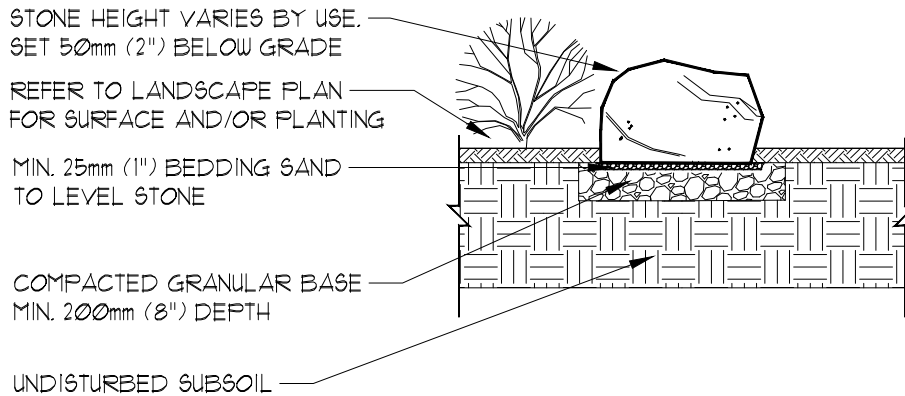


NOTES:

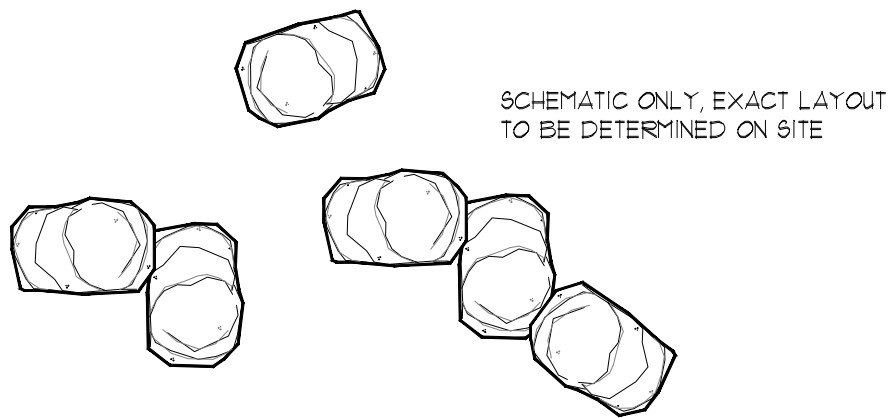
1. CONTRACTOR TO REFER TO SPECIFICATIONS.
2. ALL PLANTS TO CONFORM TO CNLA - CANADIAN STANDARDS FOR NURSERY STOCK.
3. GIVE LANDSCAPE ARCHITECT 48 HOURS NOTICE PRIOR TO INSTALLATION TO INSPECT PLANT MATERIAL - SEE GENERAL SPECIFICATIONS. PLANT MATERIAL MAY BE INSPECTED AT NURSERIES.
4. DO NOT ALLOW AIR POCKETS WHEN BACKFILLING.
5. TREE PIT SIZE TO BE MIN. 300MM WIDER THAN ROOT BALL.
6. TREE SHALL BEAR SAME RELATION TO GRADE AS IT BORE TO ITS PREVIOUSLY EXISTING GRADE. PLANT TREE 50 - 100MM ABOVE DESIRED GRADE TO ALLOW FOR SOME SETTLING.
7. DO NOT DAMAGE MAIN ROOTS WHEN INSTALLING STAKES.
8. TREES UNDER 10MM CALIPER REQUIRE TWO STAKES. TREES 10MM CALIPER AND GREATER REQUIRE THREE STAKES. REMOVE STAKES AFTER 2 YEARS.
9. NO TREE PIT SHALL BE LEFT OPEN OVERNIGHT.
10. THE ABOVE DOES NOT REPRESENT ANY PARTICULAR SPECIES.
11. ALL DIMENSIONS SHOWN IN MILLIMETERS.
12. INSTALL 75MM OF APPROVED MULCH.

N.T.S.

TVDSB DECIDUOUS TREE PLANTING DETAIL



TYPICAL SECTION LAYOUT

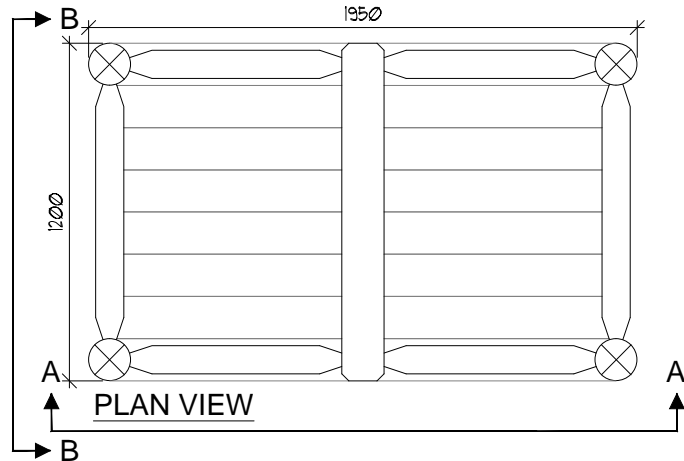


TYPICAL PLAN LAYOUT

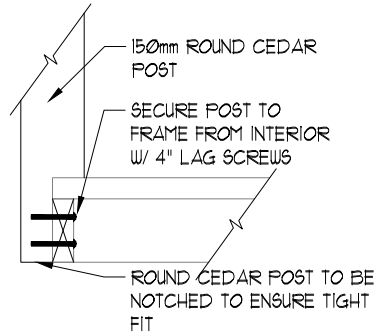
NOTES:

1. ABOVE GRAPHICS FOR ILLUSTRATION PURPOSE ONLY, PLANTING AND SOD MAY VARY.
2. CONTRACTOR TO REFER TO ALL ATTACHED SPECIFICATIONS.
3. CONTRACTOR TO SUPPLY AND INSTALL LARGE ARMOR STONE OR APPROVED ALTERNATE.
4. LANDSCAPE BOULDERS AS INDICATED ON PLANS ARE SCHEMATIC ONLY, EXACT PLACEMENT TO BE COMPLETED UNDER THE DIRECT SUPERVISION OF THE LANDSCAPE ARCHITECT.
5. BOULDERS ARE TO BE THE FOLLOWING SIZES:
APPROXIMATELY 900mm TO 1200mm IN LENGTH.
APPROXIMATELY 600mm IN WIDTH.
HEIGHT VARIES BY USE - REFER TO LANDSCAPE PLAN.
6. PLACE ADJACENT LIMESTONE IN A TIGHT FORMATION TO MAINTAIN 25mm (1") GAPS.
7. CONTRACTOR TO ENSURE SURFACE WATER IS NOT IMPEDED BY STONE INSTALLATION.

TVDSB ARMOR STONE DETAIL - N.T.S.



PLAN VIEW



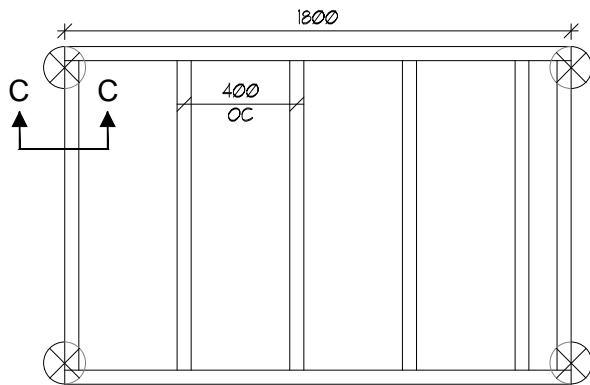
ELEVATION C-C



DESIRED LOOK

NOTES

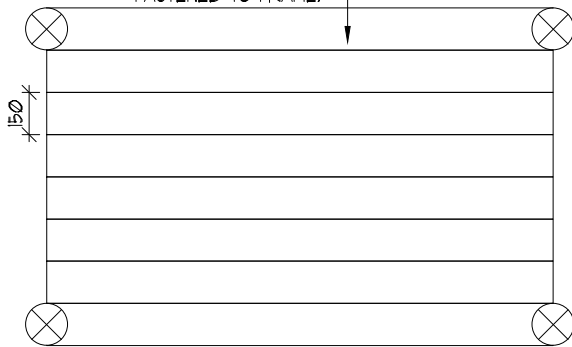
1. ALL WOOD TO BE NATIONAL LUMBER GRADE ASSOC. (N.L.G.A.) - SELECT TIGHT KNOT (S.T.K.) GRADE PRESSURE TREATED BOARD AS PER AN/CSA-Z614-14 UNLESS OTHERWISE SPECIFIED.
2. MIN. POST DIMENSIONS: 150mm (6").
3. ALL DIMENSIONS IN MILLIMETRES UNLESS NOTED OTHERWISE.
4. FINISH COLOUR TO BE CONSISTENT WITH NATURAL COLOUR OR AGED WOOD. TO BE APPROVED BY LANDSCAPE ARCHITECT, AND MEET LUMBER SUPPLIERS RECOMMENDED ASTM.
5. ALL HARDWARE TO BE HOT DIPPED GALVANIZED AS PER CAN/CSA-Z614-14.
6. CONTRACTOR TO ENSURE NO SHARP EDGES, CORNERS, OR OBJECTS.
7. ALL WOOD TO BE SANDED FOR SMOOTH FINISH TO ARCHITECTS SATISFACTION.
8. CONTRACTOR TO SUPPLY AND INSTALL MATERIALS AS NOTED.
9. OWNER TO PROVIDE ADDITIONAL ACCESSORIES ARE DESIRED.
10. ALL MATERIALS TO BE SECURELY FASTENED.
11. CONTRACTOR TO COUNTER SINK ALL FASTENERS.



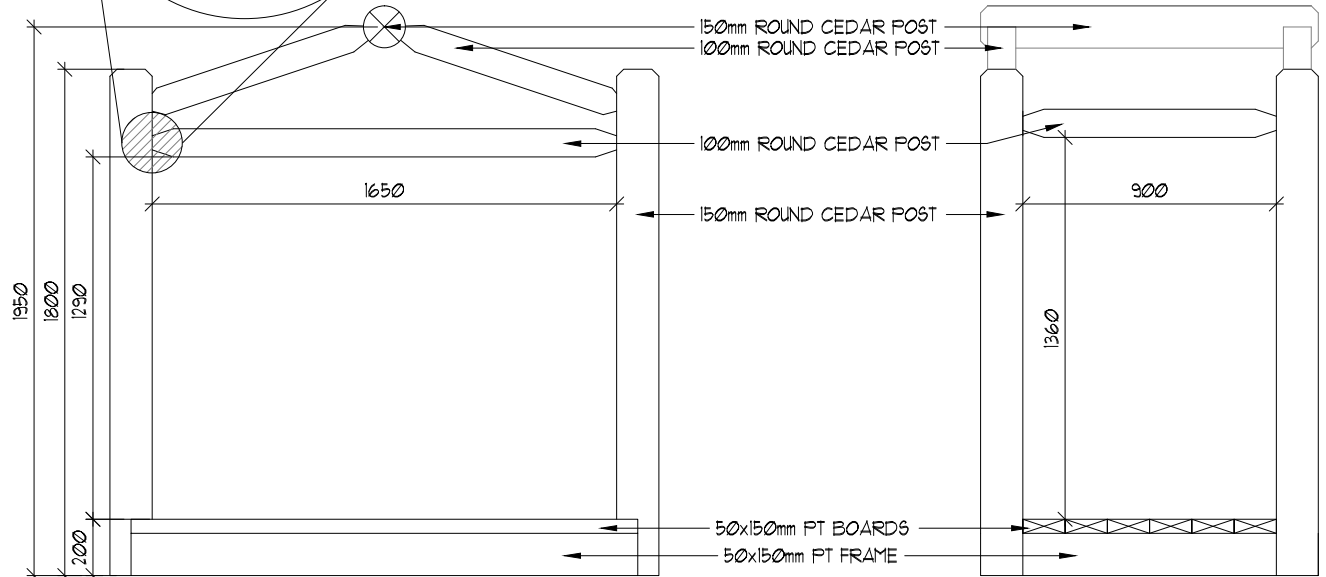
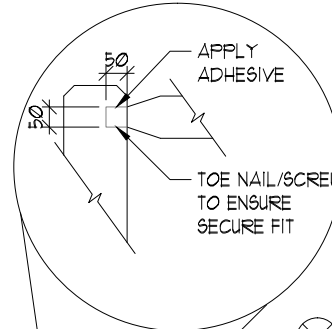
PLAN VIEW - FRAMING

NOTE: ALL FRAMING TO BE 50x150mm

50x150mm PT. BOARDS SECURELY FASTENED TO FRAME.



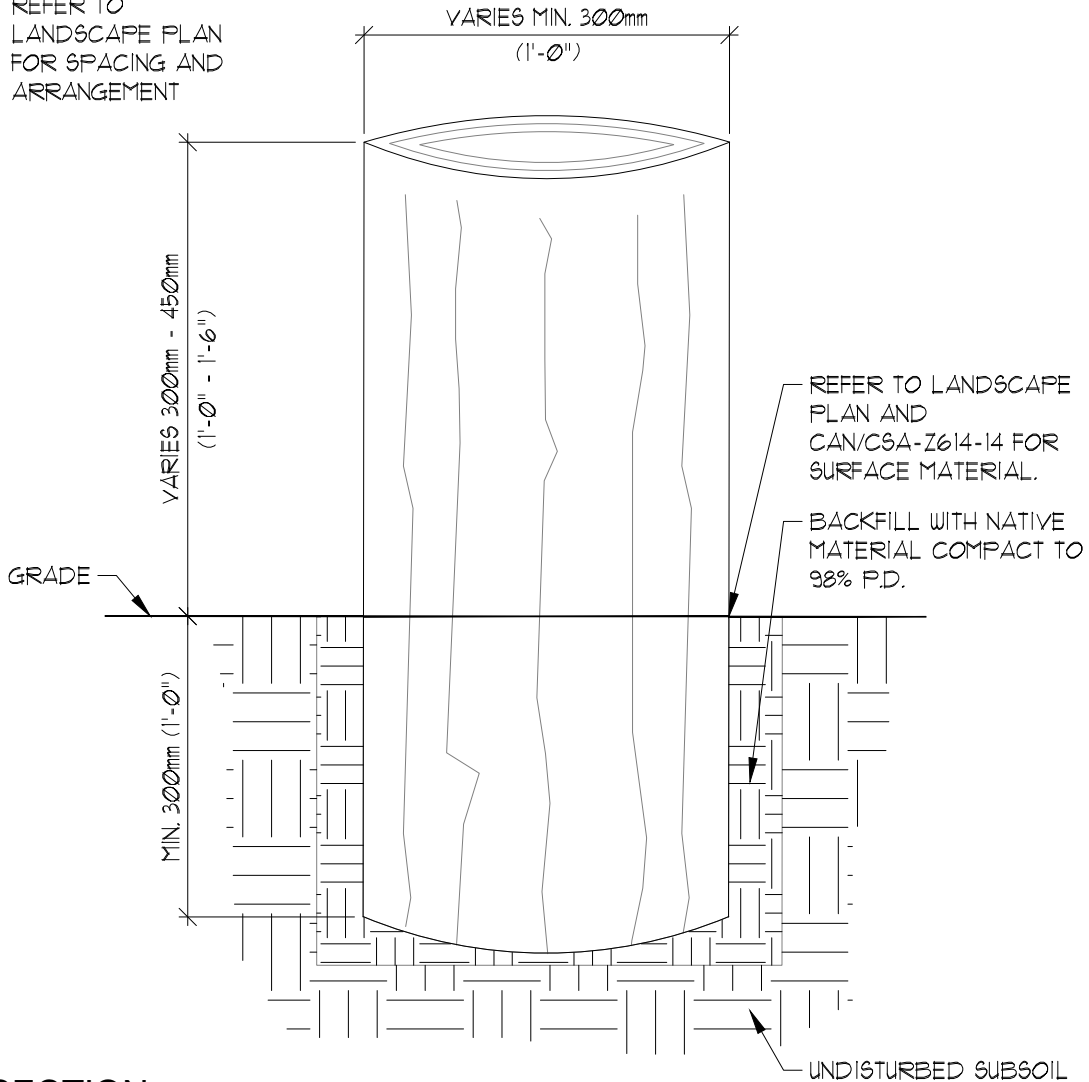
PLAN VIEW - BOARDS



ELEVATION A-A

ELEVATION B-B

REFER TO
LANDSCAPE PLAN
FOR SPACING AND
ARRANGEMENT



SECTION

NOTES:

1. CONTRACTOR TO REFER TO ALL SPECIFICATIONS.
2. CONTRACTOR TO SUPPLY AND INSTALL LOGS.
3. VERTICAL LOGS AS INDICATED ON PLANS ARE SCHEMATIC ONLY, EXACT PLACEMENT TO BE COMPLETED UNDER THE DIRECT SUPERVISION OF THE LANDSCAPE ARCHITECT.
4. REFER TO LANDSCAPE PLAN FOR SPACING AND ARRANGEMENT.
5. LOGS TO BE CUT CLEANLY AND WITH A LEVEL SURFACE.
6. LOGS TO BE INSTALLED PLUMB AND VERTICAL.
7. CONTRACTOR TO ENSURE NO SHARP EDGES, CORNERS, OR OBJECTS.
8. LOGS TO BE OF OAK, ASH, HARD MAPLE OR BEECH SPECIES, OR APPROVED ALTERNATE.
9. ALL SELECTED LOGS TO BE APPROVED BY LANDSCAPE ARCHITECT.

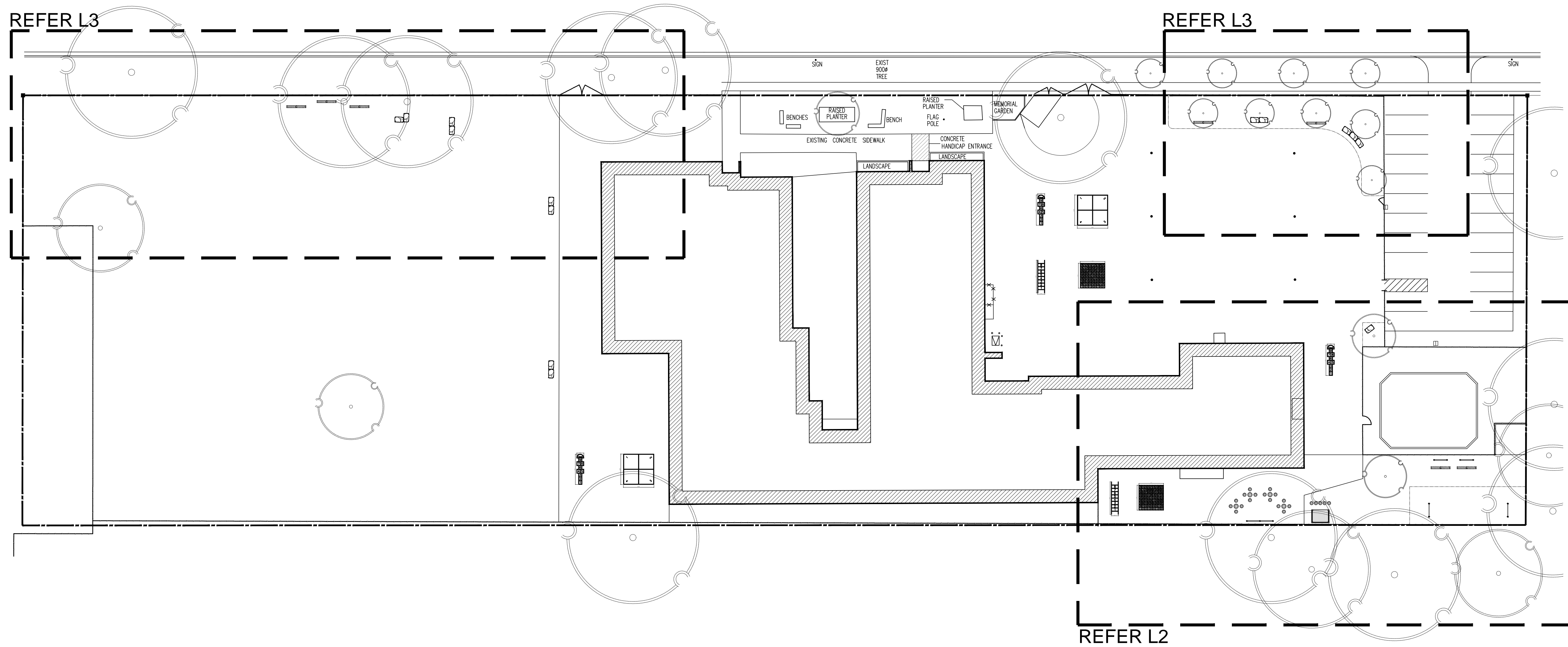
N.T.S.

TVDSB STANDARD UPRIGHT LOG DETAIL

REFER L3

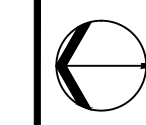
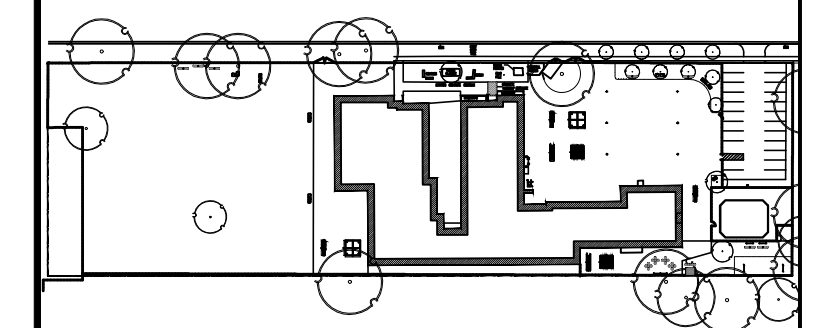
REFER L3

REFER L2



 **OVERALL PLAN**
SCALE = N.T.S.

KEY MAP



N.T.S.



ST. CLAIR CATHOLIC
DISTRICT SCHOOL BOARD



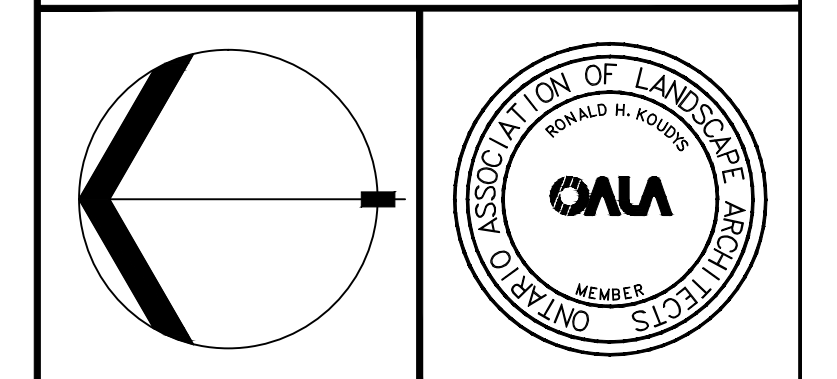
ALL DRAWINGS REMAIN THE PROPERTY OF THE LANDSCAPE ARCHITECT AND SHALL NOT BE REPRODUCED OR REUSED WITHOUT THE LANDSCAPE ARCHITECTS WRITTEN PERMISSION.

THIS DRAWING SHALL NOT BE USED FOR CONSTRUCTION OR TENDER PURPOSES UNLESS SIGNED AND DATED BY RONALD H. KOUDYS, O.A.L.A. C.S.L.A., LANDSCAPE ARCHITECT, LONDON, ONTARIO (519) 667-3322.

Ronald H. Koudys, O.A.L.A. C.S.L.A. DATE

DATE	DESCRIPTION	No.
MAY 21/15	REVISED AS PER CLIENT COMMENTS	5
MAY 11/15	REVISED AS PER CLIENT COMMENTS	4
MAR 11/15	ISSUED FOR REVIEW	3
MAR 03/15	RE-ISSUED FOR REVIEW	2
FEB 11/15	ISSUED FOR REVIEW	1

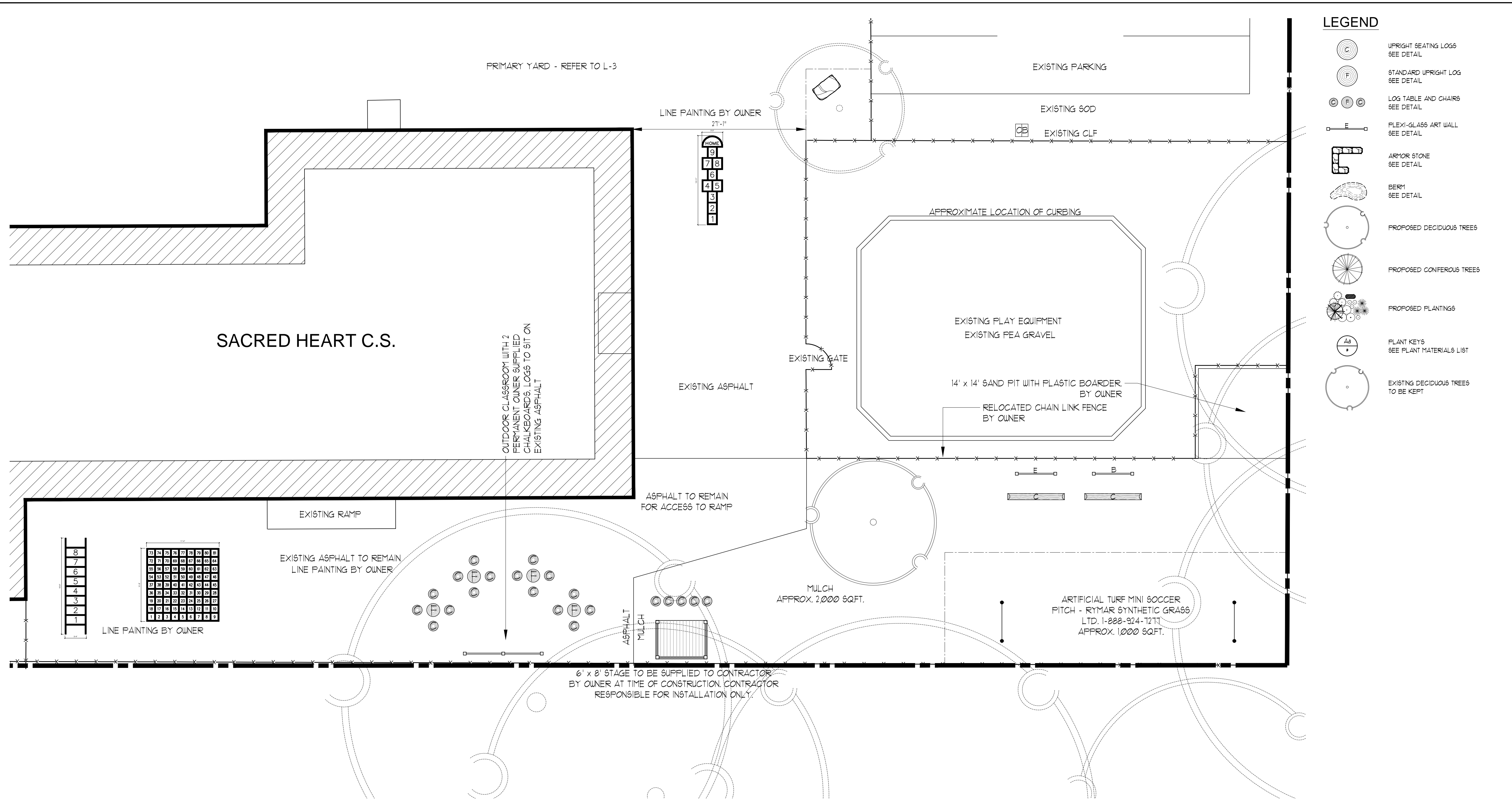
PLOTTING INFORMATION:
PLOTTED DATE • MAY 2015
PLOTTED SCALE • 1:1



PROJECT TITLE:
623
SACRED HEART C.S.
1411 LECARON AVENUE
SARNIA, ON, N7V 3J1

DRAWING TITLE:
LANDSCAPE PLAN

DATE: FEBRUARY 2015	SCALE: AS NOTED	DRAWING No.:
DRAWN: RKL/Inc.	CHECKED BY: RHK	L-1
PROJECT No.:	15-109 L1-E	



- LEGEND**
- (C) UPRIGHT SEATING LOGS SEE DETAIL
 - (F) STANDARD UPRIGHT LOG SEE DETAIL
 - (C) (F) LOG TABLE AND CHAIRS SEE DETAIL
 - E FLEXI-GLASS ART WALL SEE DETAIL
 - ARMOR STONE SEE DETAIL
 - BERM SEE DETAIL
 - (O) PROPOSED DECIDUOUS TREES
 - (C) PROPOSED CONIFEROUS TREES
 - (P) PROPOSED PLANTINGS
 - (Aa) PLANT KEYS SEE PLANT MATERIALS LIST
 - (O) EXISTING DECIDUOUS TREES TO BE KEPT

KEY MAP

N.T.S.

ST. CLAIR CATHOLIC DISTRICT SCHOOL BOARD

RON KOUDYS LANDSCAPE ARCHITECTS INC.

ALL DRAWINGS REMAIN THE PROPERTY OF THE LANDSCAPE ARCHITECT AND SHALL NOT BE REPRODUCED OR REUSED WITHOUT THE LANDSCAPE ARCHITECTS WRITTEN PERMISSION.

THIS DRAWING SHALL NOT BE USED FOR CONSTRUCTION OR TENDER PURPOSES UNLESS SIGNED AND DATED BY RONALD H. KOUDYS, O.A.L.A. C.S.L.A., LANDSCAPE ARCHITECT, LONDON, ONTARIO (519) 667-3322.

Ronald H. Koudys, O.A.L.A. C.S.L.A. DATE

DATE	DESCRIPTION	No.
MAY 21/15	REVISED AS PER CLIENT COMMENTS	5
MAY 11/15	REVISED AS PER CLIENT COMMENTS	4
MAR 11/15	ISSUED FOR REVIEW	3
MAR 03/15	RE-ISSUED FOR REVIEW	2
FEB 11/15	ISSUED FOR REVIEW	1

PLOTTING INFORMATION:

PLOTTED DATE: MAY 2015

PLOTTED SCALE: 1/1

PROJECT TITLE:

623
SACRED HEART C.S.
1411 LECARON AVENUE
SARNIA, ON, N7V 3J1

DRAWING TITLE:

FDK LANDSCAPE PLAN

DATE: FEBRUARY 2015	SCALE: AS NOTED	DRAWING No.:
DRAWN: RKL/Inc.	CHECKED BY: RHK	L-2
PROJECT No.:	15-109 L1-E	

FDK LANDSCAPE PLAN
SCALE = 1/8" = 1' SHEET: 24X36



GRAPHIC REPRESENTATION OF TABLE AND CHAIRS



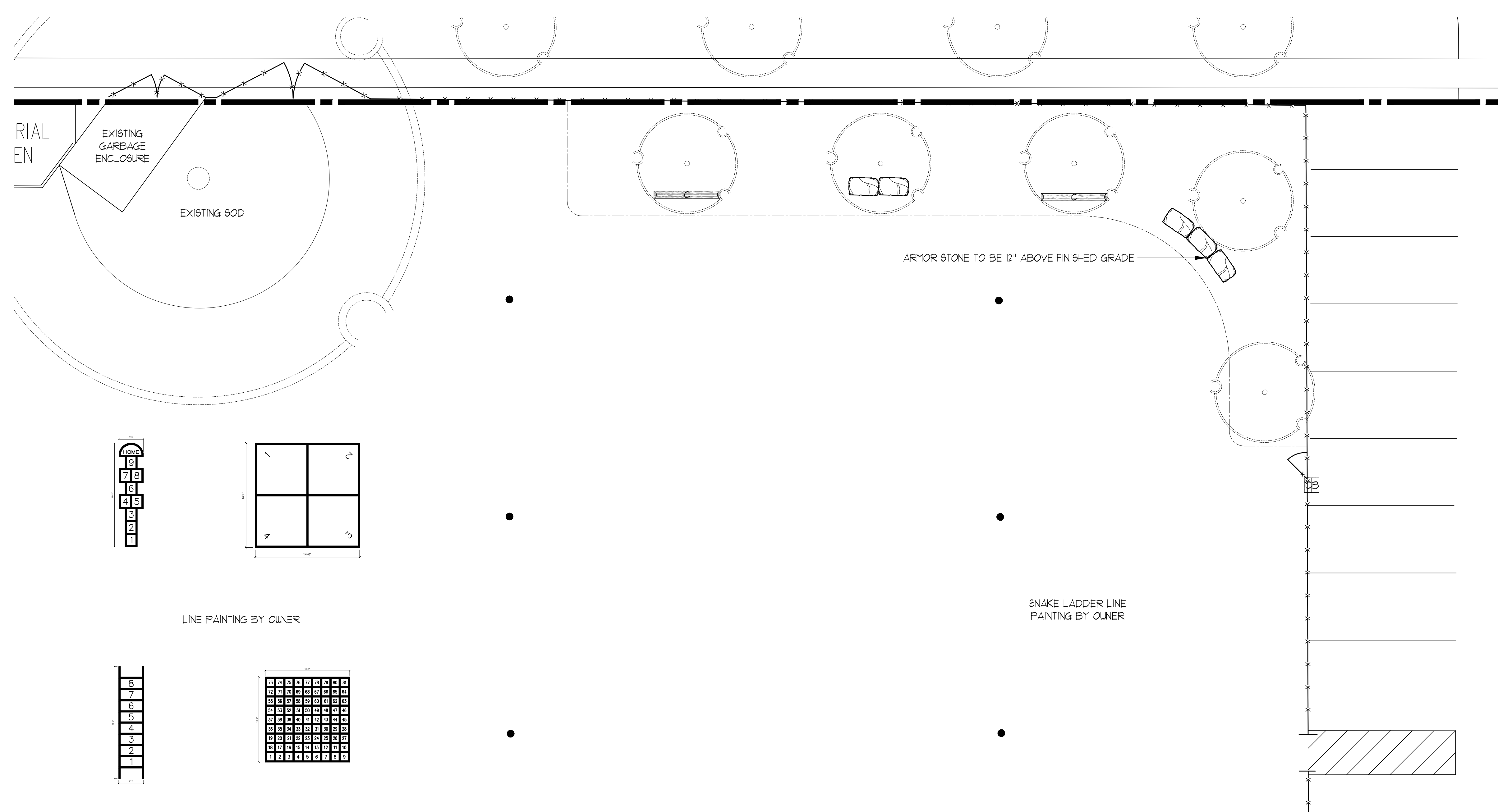
GRAPHIC REPRESENTATION OF STAGE. (4'x6' SHOWN)



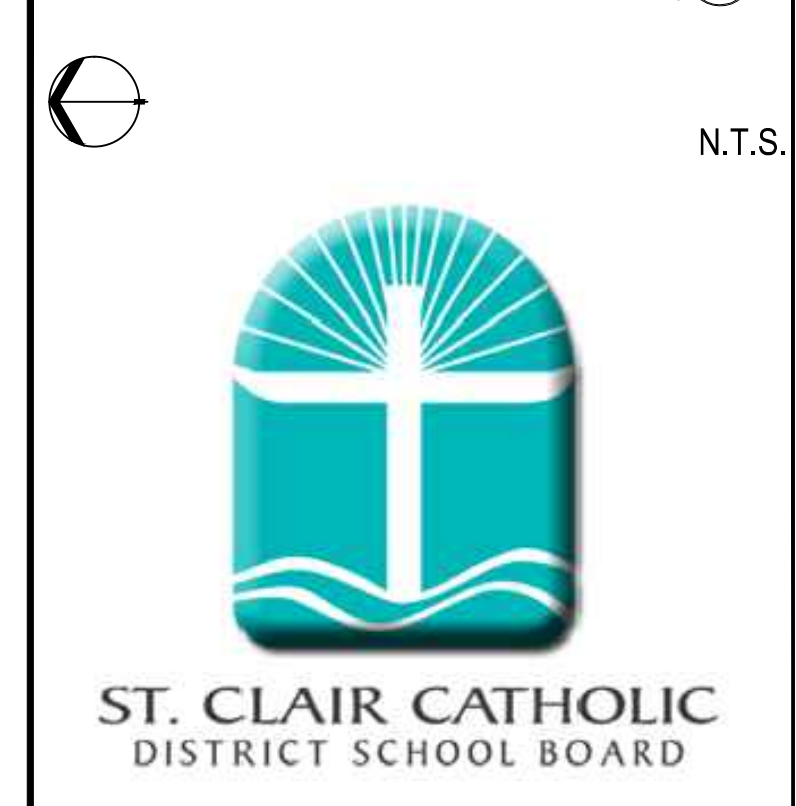
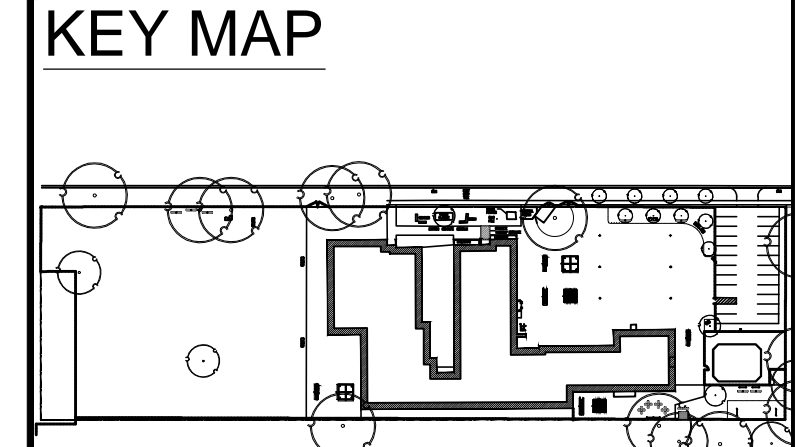
GRAPHIC REPRESENTATION OF PLEXI-GLASS ART WALL



GRAPHIC REPRESENTATION OF MUSIC WALLS



- LEGEND**
- ARMOR STONE
SEE DETAIL
 - PROPOSED DECIDUOUS TREES
 - PROPOSED CONIFEROUS TREES
 - PROPOSED PLANTINGS
 - PLANT KEYS
SEE PLANT MATERIALS LIST
 - EXISTING DECIDUOUS TREES
TO BE KEPT

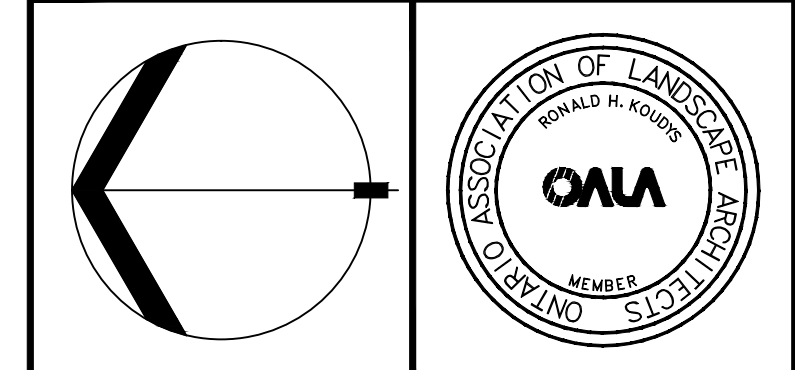


ALL DRAWINGS REMAIN THE PROPERTY OF THE LANDSCAPE ARCHITECT AND SHALL NOT BE REPRODUCED OR REUSED WITHOUT THE LANDSCAPE ARCHITECTS WRITTEN PERMISSION.
THIS DRAWING SHALL NOT BE USED FOR CONSTRUCTION OR TENDER PURPOSES UNLESS SIGNED AND DATED BY RONALD H. KOUDYS, O.A.L.A. C.S.L.A., LANDSCAPE ARCHITECT, LONDON, ONTARIO (519) 667-3322.

Ronald H. Koudys, O.A.L.A. C.S.L.A. DATE _____

DATE	DESCRIPTION	No.
MAY 21 15	REVISED AS PER CLIENT COMMENTS	5
MAY 11 15	REVISED AS PER CLIENT COMMENTS	4
MAR 11 15	ISSUED FOR REVIEW	3
MAR 03 15	RE-ISSUED FOR REVIEW	2
FEB 11 15	ISSUED FOR REVIEW	1

PLOTTING INFORMATION:
 PLOTTED DATE: MAY 2015
 PLOTTED SCALE: 1/1

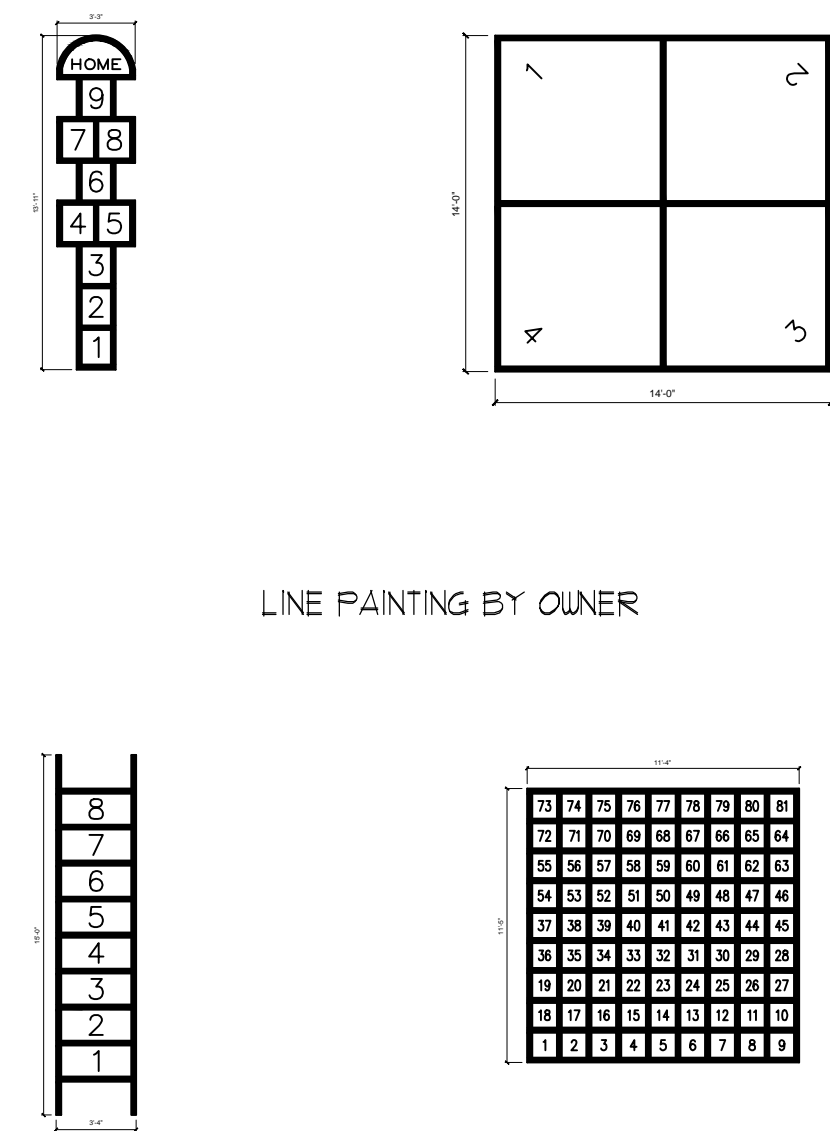


PROJECT TITLE:
 623
 SACRED HEART C.S.
 1411 LECARON AVENUE
 SARNAIA, ON, N7V 3J1

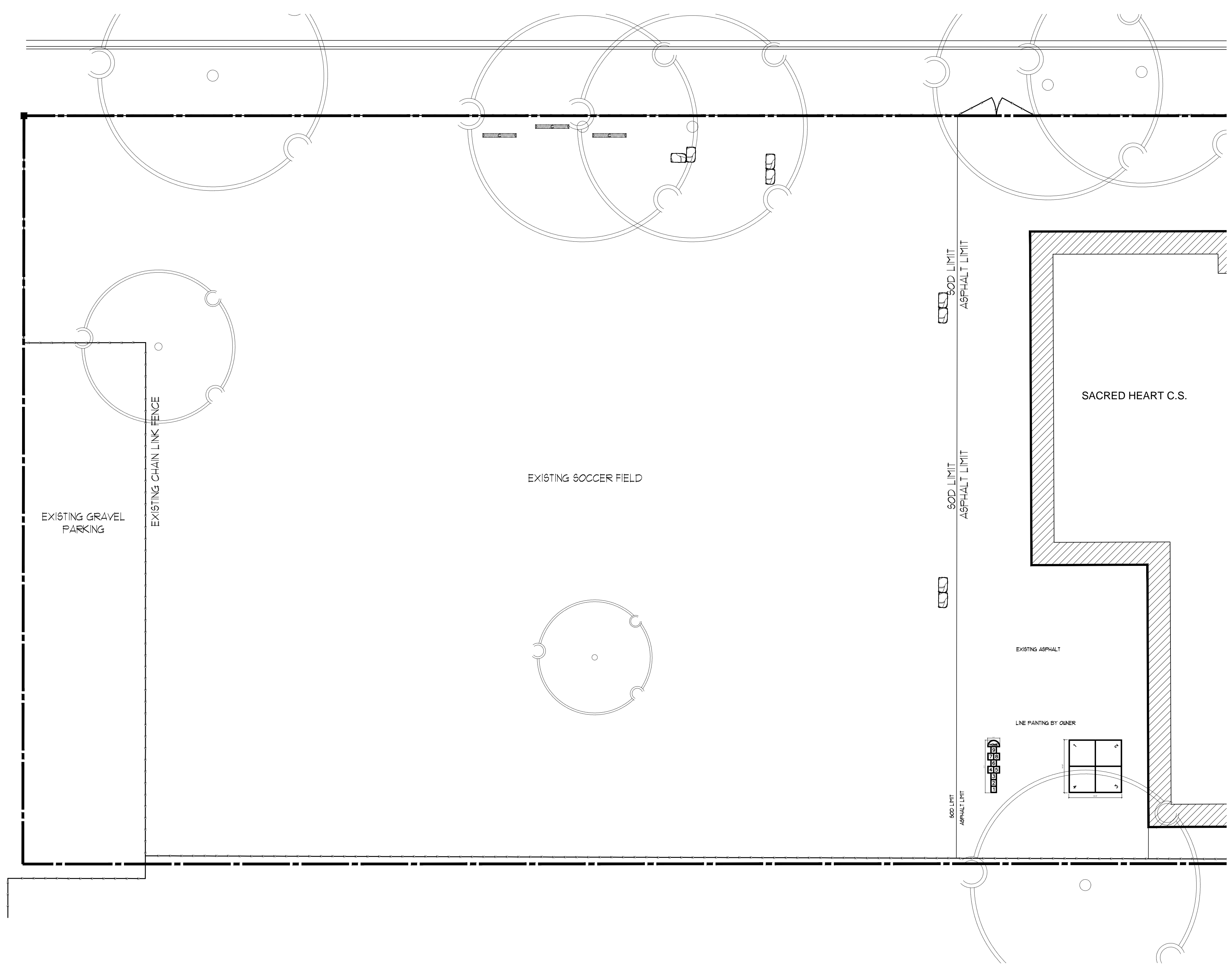
DRAWING TITLE:
 LANDSCAPE PLAN

DATE: FEBRUARY 2015	SCALE: AS NOTED	DRAWING No.:
DRAWN: RKL, Inc.	CHECKED BY: RHK	L-3
PROJECT No.:	15-109 L1-E	

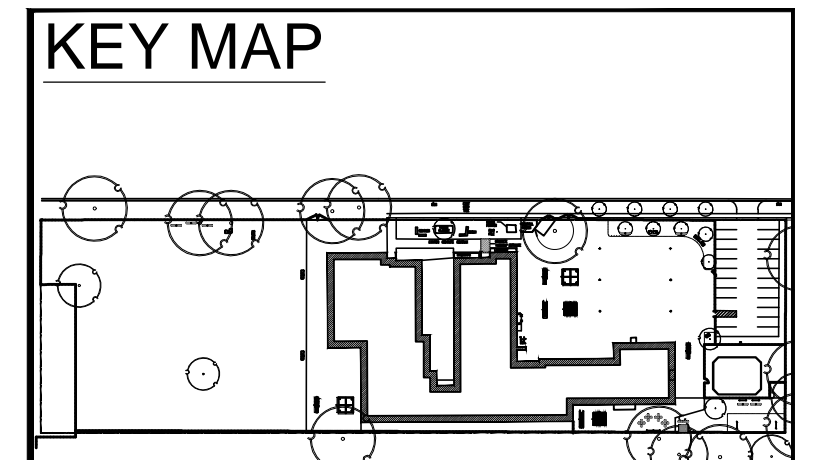
PRIMARY LANDSCAPE PLAN
 SCALE = 1/8" = 1' SHEET: 24X36



SNAKE LADDER LINE PAINTING BY OWNER



- LEGEND**
- ARMOR STONE
SEE DETAIL
 - PROPOSED DECIDUOUS TREES
 - PROPOSED CONIFEROUS TREES
 - PROPOSED PLANTINGS
 - PLANT KEYS
SEE PLANT MATERIALS LIST
 - EXISTING DECIDUOUS TREES
TO BE KEPT



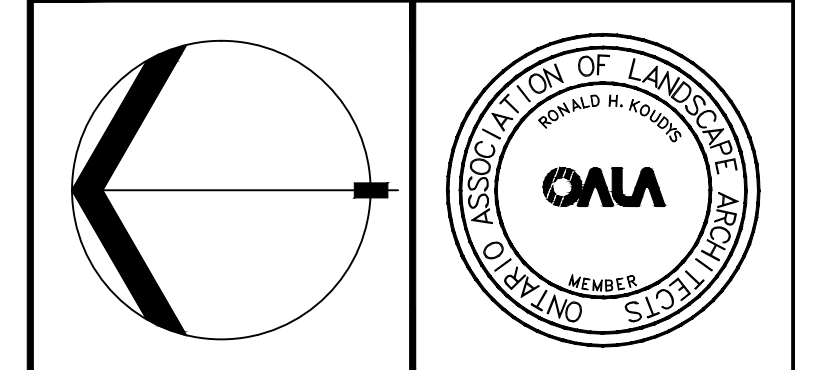
ALL DRAWINGS REMAIN THE PROPERTY OF THE LANDSCAPE ARCHITECT AND SHALL NOT BE REPRODUCED OR REUSED WITHOUT THE LANDSCAPE ARCHITECTS WRITTEN PERMISSION.

THIS DRAWING SHALL NOT BE USED FOR CONSTRUCTION OR TENDER PURPOSES UNLESS SIGNED AND DATED BY RONALD H. KLOUDYS, O.A.L.A. C.S.L.A., LANDSCAPE ARCHITECT, LONDON, ONTARIO (519) 667-3322.

Ronald H. Koudys, O.A.L.A. C.S.L.A. DATE

DATE	DESCRIPTION	No.
MAY 21/15	REVISED AS PER CLIENT COMMENTS	5
MAY 13/15	REVISED AS PER CLIENT COMMENTS	4
MAR 11/15	ISSUED FOR REVIEW	3
MAR 03/15	RE-ISSUED FOR REVIEW	2
FEB 11/15	ISSUED FOR REVIEW	1

PLOTTING INFORMATION:
 PLOTTED DATE: MAY 2015
 PLOTTED SCALE: 1:1

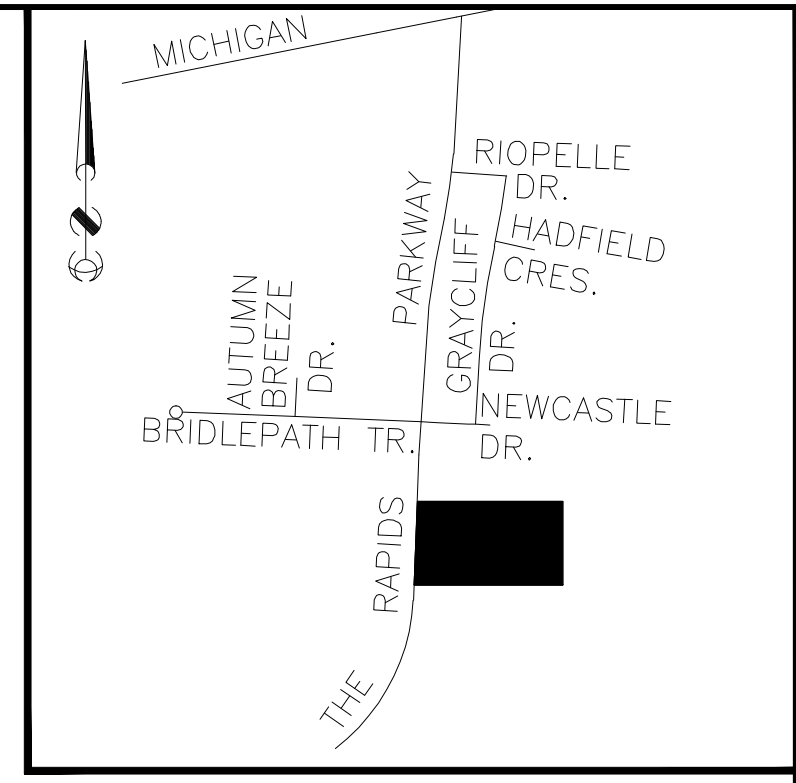
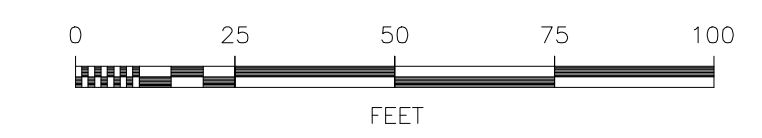
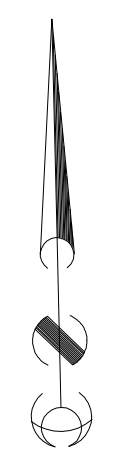


PROJECT TITLE:
 623
 SACRED HEART C.S.
 1411 LECARON AVENUE
 SARNIA, ON, N7V 3J1

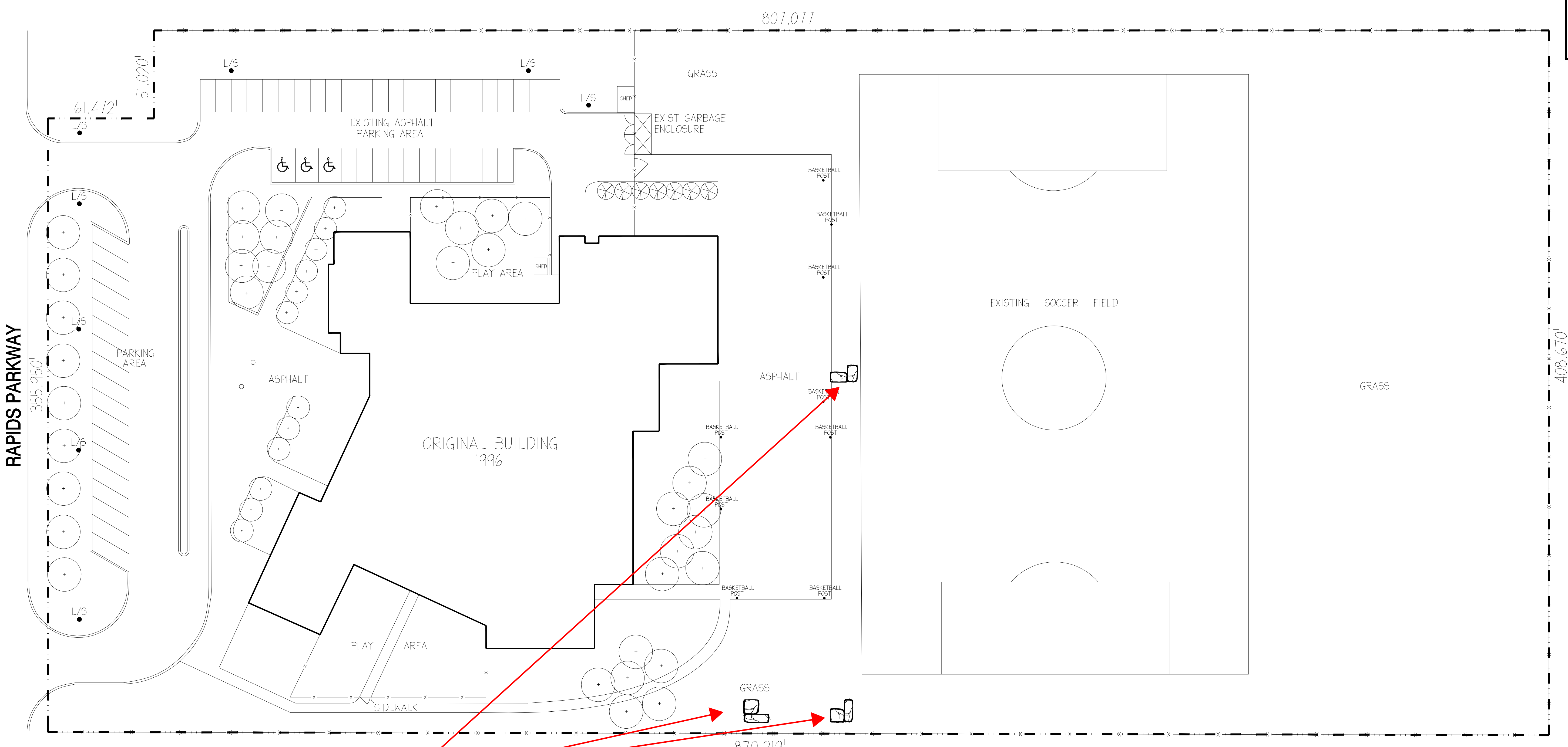
DRAWING TITLE:
 LANDSCAPE
 PLAN

DATE: FEBRUARY 2015	SCALE: AS NOTED	DRAWING No. L-4
DRAWN: RKL/Inc.	CHECKED BY: RHK	
PROJECT No. 15-109 L1-E		

NORTH YARD LANDSCAPE PLAN
 SCALE = 1/16" = 1'
 SHEET: 24X36



KEY PLAN
N.T.S.



Armor Stone: Supply and install approx. 24 ft of armor stone as per plan. Refer to Ron Koudys Landscape Architects Inc. titled TVDSB Armor Stone Detail.

SITE DATA	
SITE AREA	8.00 ACRES
# OF PARKING SPACES	55 SPACES
PAVED PLAY AREA	0.41 ACRES / 17,990 SQ. FEET
UNPAVED PLAY AREA	4.56 ACRES / 198,678 SQ. FEET
TOTAL PLAY AREA	4.97 ACRES / 216,668 SQ. FEET
BUILDING FOOTPRINT	39,253 SQ. FEET

- THE CONTRACTOR SHALL CHECK AND VERIFY ALL DIMENSIONS AND REPORT ANY ERRORS OR OMISSIONS TO THE ENGINEER PRIOR TO PROCEEDING WITH ANY WORK ON THIS PROJECT. ALL DRAWINGS AND SPECIFICATIONS ARE THE PROPERTY OF THE ENGINEER.
 - THESE DRAWINGS AND SPECIFICATIONS ARE DESIGNED SOLELY FOR THE CLIENT AND THE PROPERTY INDICATED, AND SHALL NOT BE CONSTRUCTED FOR ANY OTHER CLIENT AND (OR) ON ANY OTHER PROPERTY.

ST. CLAIR CATHOLIC DISTRICT SCHOOL BOARD
Lighting the Way - Rejoicing in Our Journey
 420 CREEK STREET, WALLACEBURG, ONTARIO N8A 4C4

Stamp

T. W. GRAY & ASSOCIATES ENGINEERING LIMITED
 301 FRONT STREET N, SARNIA, ONTARIO N7T 5S6
 PHONE: (519) 336-0486 FAX: (519) 336-5379

0	FOR REVIEW	01/07	B.K.
No.	Revision	Date	By

Plan
AS SHOWN

Design T.W. GRAY
 Drawn B. KELCH
 Checked T.W. GRAY
 Date JULY 2007

ST. ANNE CATHOLIC SCHOOL
 1000 RAPIDS PARKWAY, SARNIA, ONTARIO

Project No.
07-5203
 Dwg File: 5203 SP
 Drawing No.
SP



SCCDSB – OUTDOOR LEARNING ENVIRONMENT

Project # 634-CP1508

SCHOOL: ST. JOSEPH CS – CORUNNA
535 Birchbank Drive, Corunna, ON N0N 1G0

QUOTATION CLOSES: Thursday, June 11, 2015 @ 2:00PM

ALL QUOTATIONS TO BE HAND DELIVERED IN A SEALED ENVELOPE TO:

QUOTATIONS QUOTED OVER THE PHONE WILL NOT BE ACCEPTED.

QUOTATIONS TO CONFORM TO THE ENCLOSED PRICING SCHEDULE.

CONTRACTOR TO MAKE SELF FAMILIAR WITH SITE(S) AND MAKE AT LEAST ONE SITE VISIT PRIOR TO BIDDING ON THIS QUOTATION PACKAGE.

BID SUBMITTED BY: _____

DATE OF SITE VISIT: _____

SUBCONTRACTORS TO BE USED AND THEIR SCOPE OF WORK:

AWARDED PROJECTS TO BE COMPLETED BY: August 21, 2015

NUMBER OF WORKING DAYS REQUIRED TO COMPLETE PROJECT: _____

QUOTATION PRICE (excluding HST): _____

CONTRACTOR RESPONSIBLE FOR **ALL PERMITS**.
CONTRACTOR RESPONSIBLE FOR **ALL UTILITY LOCATES**.
ALL WORKMANSHIP TO BE GUARANTEED FOR **ONE YEAR**.

ENSURE POSITIVE DRAINAGE IN ALL AREAS.
REPORT ALL **DISCREPANCIES AT TIME OF QUOTATION**.
ERRORS OR OMISSIONS WILL BE **THE RESPONSIBILITY OF THE CONTRACTOR**.

NOTES:

LOWEST PRICE NOT ALWAYS AWARDED PROJECT.
INSTALL ALL MATERIAL TO MANUFACTURER'S SPECIFICATIONS

ITEM	DESCRIPTION	UNIT	EST. QTY	UNIT PRICE	TOTAL PRICE
1.0	REMOVALS (L-2)				
1.1	<u>Site Preparation:</u> Remove all existing pea gravel stone within fenced area and remove off site.	sq ft	4070	\$ _____	\$ _____
1.1 to 1.1 Sub-Total \$					\$ _____
2.0	PLANT MATERIAL (L-3) Prices to include all excavation, topsoil and mulch as specified on the landscape plans. Excess material to be disposed off site.				
2.1	Red Maple (60mmcal)	ea	4	\$ _____	\$ _____
2.2	Red Oak (60mmcal)	ea	1	\$ _____	\$ _____
2.1 to 2.2 Sub-total \$					\$ _____
3.0	LANDSCAPE WORKS (L-3)				
3.1	<u>Asphalt:</u> Supply and Install 5' wide HL3 hot mix asphalt pathway on approved base. Asphalt thickness to be 2" minimum.	sq ft	775	\$ _____	\$ _____
<i>Outdoor Classroom</i>					
3.2	<u>Armor Stone:</u> Supply and Install approx. 60' of armor stone as per plan on approved base. Refer to all attached details and specifications.	lin ft	60	\$ _____	\$ _____
3.3	<u>Mulch:</u> Supply and install 'Gro-Bark' fibertop mulch at 6" thickness.	sq ft	900	\$ _____	\$ _____
3.4	<u>Seating Logs:</u> Supply and install 8' long seating logs. Refer to all attached details and specifications.	ea	2	\$ _____	\$ _____
<i>Performance Area</i>					
3.5	<u>Stage:</u> Supply and install 6'x8' stage as per details.	lump	1	\$ _____	\$ _____
3.6	<u>Stage Seats:</u> Supply and install seating stools by stage. Refer to all attached details and specifications	ea	5	\$ _____	\$ _____
3.7	<u>Tables and Chairs:</u> Supply and install table and chair sets. Refer to all attached details and specifications	ea	2	\$ _____	\$ _____
3.8	<u>Chalkboard Frames:</u> Supply and install chalkboard frame to accept two 4'x8' chalkboards. Chalkboards to be supplied by owner prior to construction for mochups. Refer to all attached details and specifications	ea	2	\$ _____	\$ _____

3.9 Mulch: Supply and install 'Gro-Bark' fibertop mulch at 6" thickness. sq ft 600 \$ _____ \$ _____

Sand Pit Area

3.10 Sand Pit: Supply and install sand pit as designed. Price to include all excavation and removals off side, edging logs, decorative logs, armor stone, sand, liner, and base material. lump 1 \$ _____ \$ _____

Log Climber

3.11 Logs: Supply and install logs at various heights. Refer to all details and specifications. lump 1 \$ _____ \$ _____

3.12 Mulch: Supply and install 'Gro-Bark' fibertop mulch at 6" thickness. Mulch to meet impact attenuation surfacing standards as outlined in CAN/CSA Z-614-14. sq ft 450 \$ _____ \$ _____

Play Truck Area

3.13 Play Truck: Supply play truck. Colors to be Sahara Brown for front of truck, Sandlewood for back of truck, and Tan/Green/Tan for panels. Play truck to be supplied by Ape Playground Equipment. Sharon Scarfone - 519-652-8154 lump 1 \$2,825.00

3.14 Play Truck: Install play truck. lump 1 \$ _____ \$ _____

3.15 Mulch: Supply and install 'Gro-Bark' fibertop mulch at 6" thickness. Mulch to meet impact attenuation surfacing standards as outlined in CAN/CSA Z-614-14. sq ft 450 \$ _____ \$ _____

Misc.

3.16 Xylophone Feature: Supply and install xylophone. Refer to all details and specifications ea 1 \$ _____ \$ _____

3.17 Music Wall Frame: Supply and install music wall frame. Refer to all details and specifications ea 1 \$ _____ \$ _____

3.1 to 3.17 Sub-total \$ _____

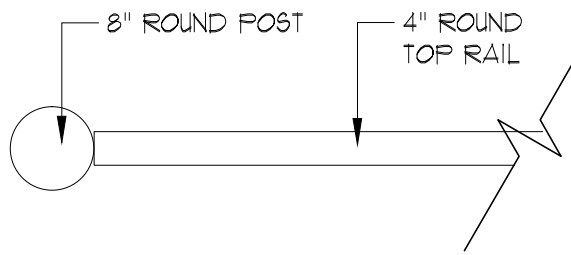
Section 1 to 3 Total \$ _____

Contingency at 10% \$ _____

Sub-Total \$ _____

HST \$ _____

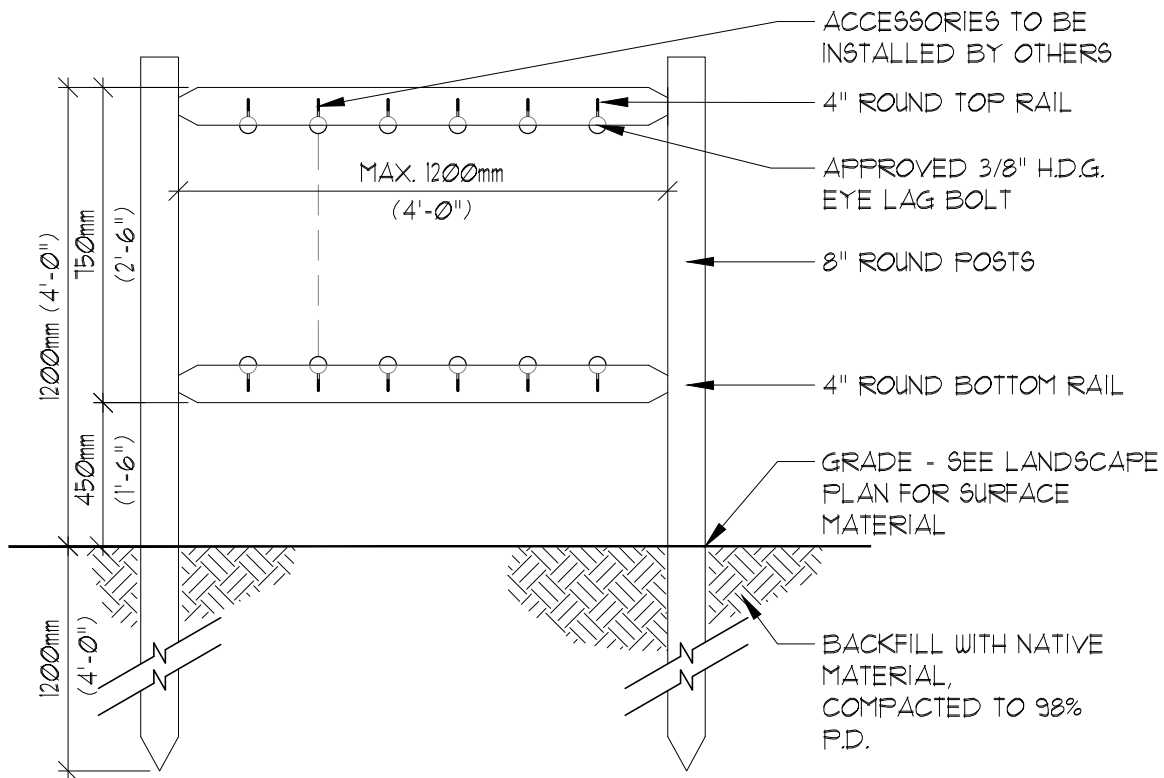
TOTAL \$ _____



PLAN



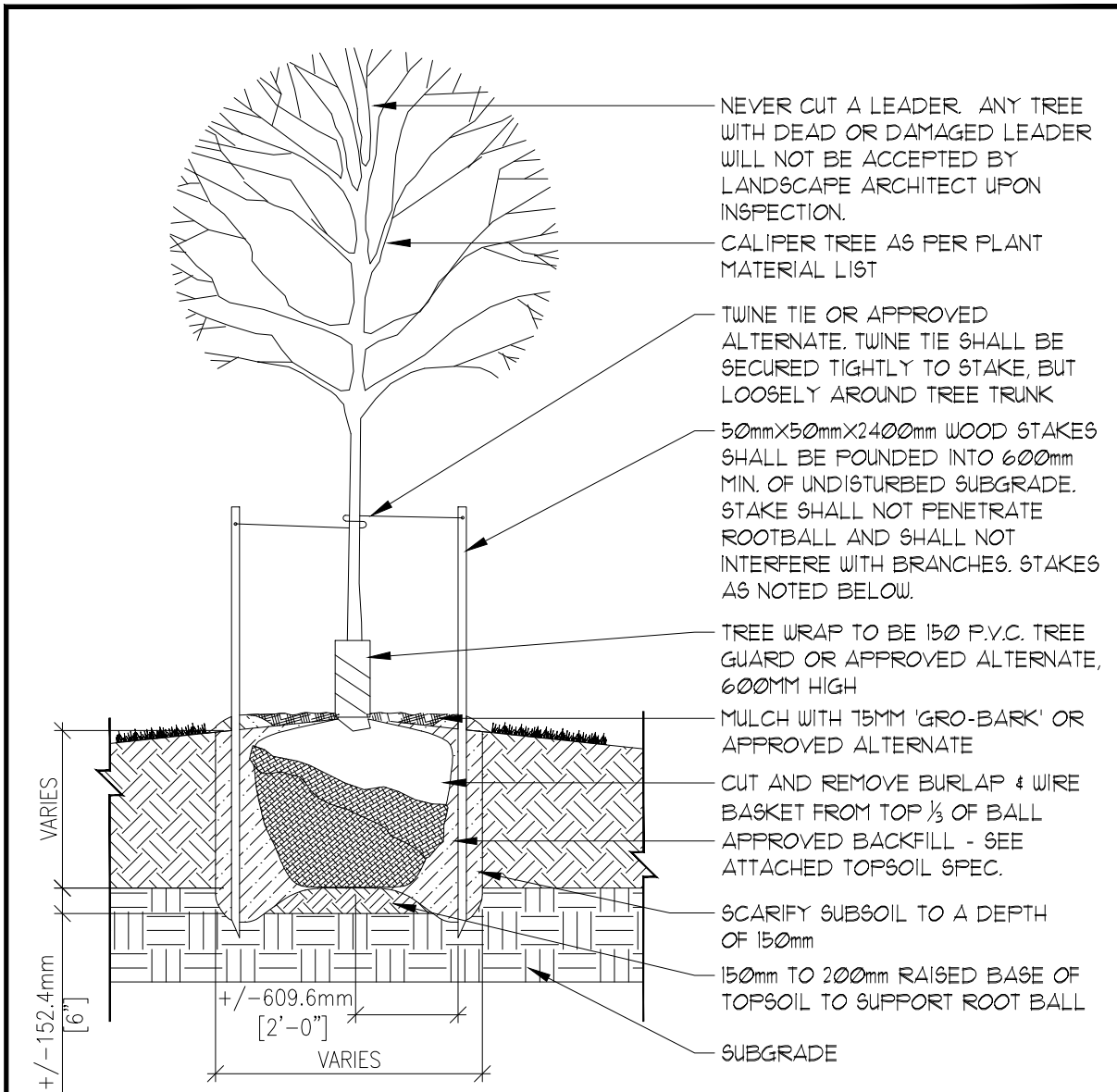
DESIRED FRAME LOOK
INSERTS WILL VARY



FRONT ELEVATION

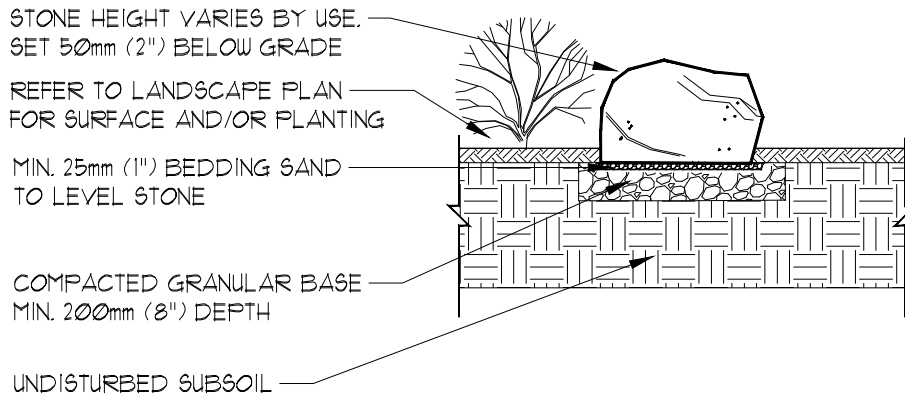
NOTES:

1. CONTRACTOR TO REFER TO ALL SPECIFICATIONS.
2. CONTRACTOR TO SUPPLY AND INSTALL ALL MATERIAL AS NOTED ABOVE.
3. ALL HARDWARE TO BE HOT DIPPED GALVANIZED (H.D.G.) AS PER TVDSB SPECIFICATIONS AND CAN/CSA-Z614-14.
4. ALL WOOD TO BE LUMBER GRADE ASSOC. (N.L.G.A.) SELECTION TIGHT KNOT (S.T.K.) GRADE PRESSURE TREATED BOARD AS PER CAN/CSA-Z614-14.
5. ACTIVITY WALL FRAMES AS INDICATED ON PLANS ARE SCHEMATIC ONLY, EXACT PLACEMENT TO BE COMPLETED UNDER THE DIRECT SUPERVISION OF THE LANDSCAPE ARCHITECT.
6. CONTRACTOR TO ENSURE NO SHARP EDGES, CORNERS, OR OBJECTS.
7. CLIENT TO PROVIDE ADDITIONAL ACCESSORIES.
8. THE INTENDED USE OF THIS FEATURE IS TO BE PLAYED WITH BOTH FEET PLACED FIRMLY ON THE GROUND.

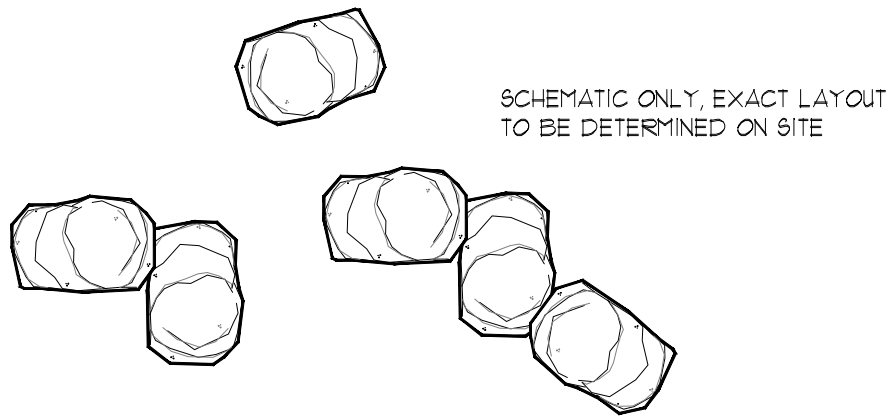


NOTES:

1. CONTRACTOR TO REFER TO SPECIFICATIONS.
2. ALL PLANTS TO CONFORM TO CNLA - CANADIAN STANDARDS FOR NURSERY STOCK.
3. GIVE LANDSCAPE ARCHITECT 48 HOURS NOTICE PRIOR TO INSTALLATION TO INSPECT PLANT MATERIAL - SEE GENERAL SPECIFICATIONS. PLANT MATERIAL MAY BE INSPECTED AT NURSERIES.
4. DO NOT ALLOW AIR POCKETS WHEN BACKFILLING.
5. TREE PIT SIZE TO BE MIN. 300MM WIDER THAN ROOT BALL.
6. TREE SHALL BEAR SAME RELATION TO GRADE AS IT BORE TO ITS PREVIOUSLY EXISTING GRADE. PLANT TREE 50 - 100MM ABOVE DESIRED GRADE TO ALLOW FOR SOME SETTLING.
7. DO NOT DAMAGE MAIN ROOTS WHEN INSTALLING STAKES.
8. TREES UNDER 10MM CALIPER REQUIRE TWO STAKES. TREES 10MM CALIPER AND GREATER REQUIRE THREE STAKES. REMOVE STAKES AFTER 2 YEARS.
9. NO TREE PIT SHALL BE LEFT OPEN OVERNIGHT.
10. THE ABOVE DOES NOT REPRESENT ANY PARTICULAR SPECIES.
11. ALL DIMENSIONS SHOWN IN MILLIMETERS.
12. INSTALL 75MM OF APPROVED MULCH.



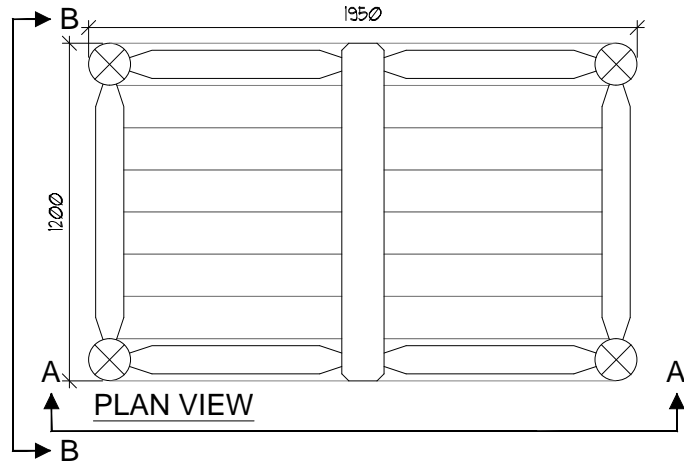
TYPICAL SECTION LAYOUT



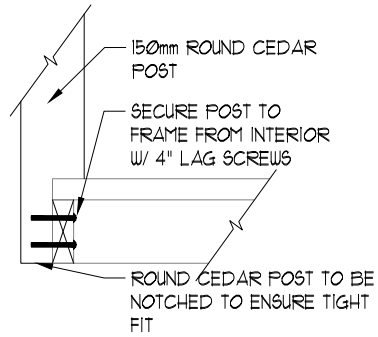
TYPICAL PLAN LAYOUT

NOTES:

1. ABOVE GRAPHICS FOR ILLUSTRATION PURPOSE ONLY, PLANTING AND SOD MAY VARY.
2. CONTRACTOR TO REFER TO ALL ATTACHED SPECIFICATIONS.
3. CONTRACTOR TO SUPPLY AND INSTALL LARGE ARMOR STONE OR APPROVED ALTERNATE.
4. LANDSCAPE BOULDERS AS INDICATED ON PLANS ARE SCHEMATIC ONLY, EXACT PLACEMENT TO BE COMPLETED UNDER THE DIRECT SUPERVISION OF THE LANDSCAPE ARCHITECT.
5. BOULDERS ARE TO BE THE FOLLOWING SIZES:
APPROXIMATELY 900mm TO 1200mm IN LENGTH.
APPROXIMATELY 600mm IN WIDTH.
HEIGHT VARIES BY USE - REFER TO LANDSCAPE PLAN.
6. PLACE ADJACENT LIMESTONE IN A TIGHT FORMATION TO MAINTAIN 25mm (1") GAPS.
7. CONTRACTOR TO ENSURE SURFACE WATER IS NOT IMPEDED BY STONE INSTALLATION.



PLAN VIEW



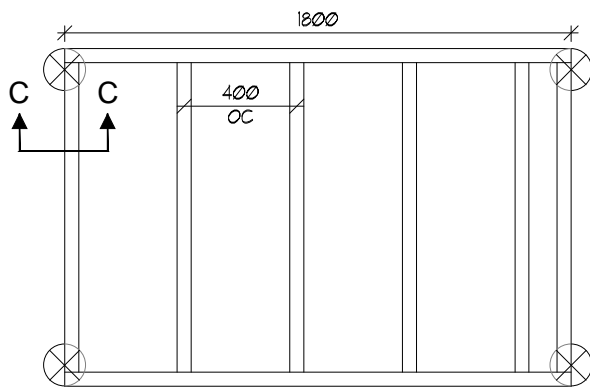
ELEVATION C-C



DESIRED LOOK

NOTES

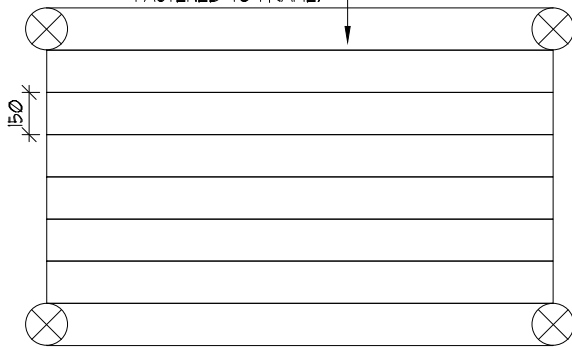
1. ALL WOOD TO BE NATIONAL LUMBER GRADE ASSOC. (N.L.G.A.) - SELECT TIGHT KNOT (S.T.K.) GRADE PRESSURE TREATED BOARD AS PER AN/CSA-Z614-14 UNLESS OTHERWISE SPECIFIED.
2. MIN. POST DIMENSIONS: 150mm (6").
3. ALL DIMENSIONS IN MILLIMETRES UNLESS NOTED OTHERWISE.
4. FINISH COLOUR TO BE CONSISTENT WITH NATURAL COLOUR OR AGED WOOD. TO BE APPROVED BY LANDSCAPE ARCHITECT, AND MEET LUMBER SUPPLIERS RECOMMENDED ASTM.
5. ALL HARDWARE TO BE HOT DIPPED GALVANIZED AS PER CAN/CSA-Z614-14.
6. CONTRACTOR TO ENSURE NO SHARP EDGES, CORNERS, OR OBJECTS.
7. ALL WOOD TO BE SANDED FOR SMOOTH FINISH TO ARCHITECTS SATISFACTION.
8. CONTRACTOR TO SUPPLY AND INSTALL MATERIALS AS NOTED.
9. OWNER TO PROVIDE ADDITIONAL ACCESSORIES ARE DESIRED.
10. ALL MATERIALS TO BE SECURELY FASTENED.
11. CONTRACTOR TO COUNTER SINK ALL FASTENERS.



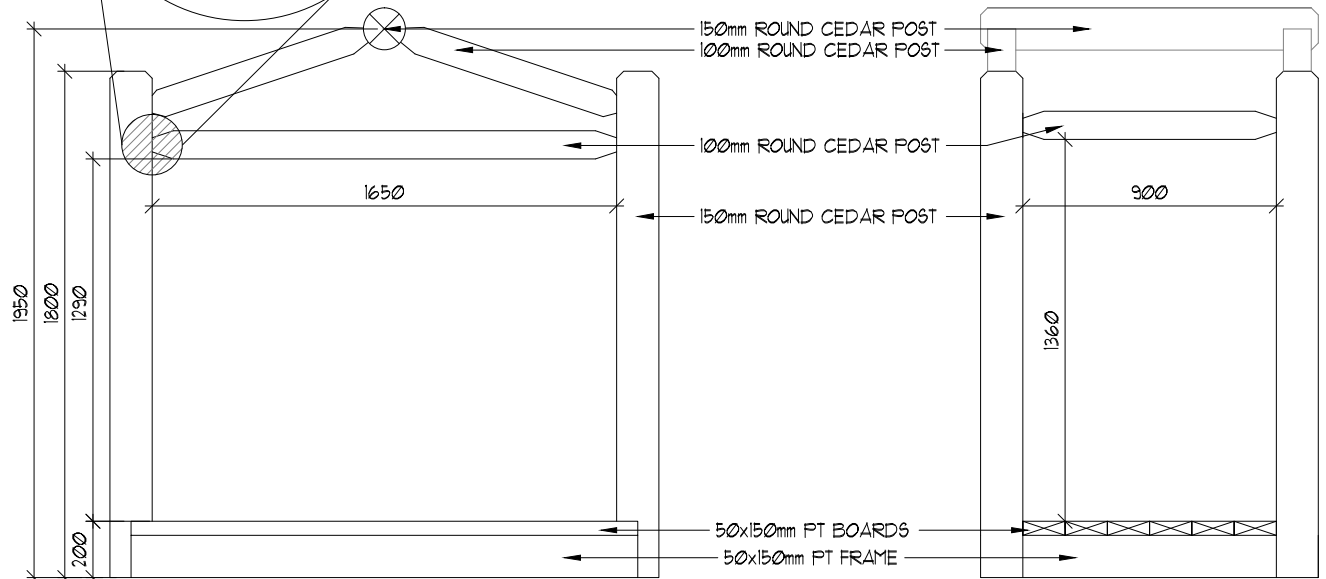
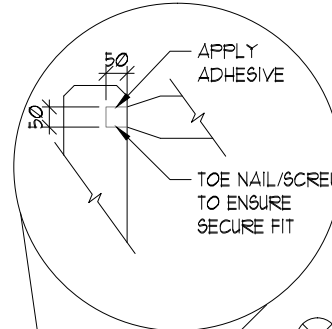
PLAN VIEW - FRAMING

NOTE: ALL FRAMING TO BE 50x150mm

50x150mm PT. BOARDS SECURELY FASTENED TO FRAME.



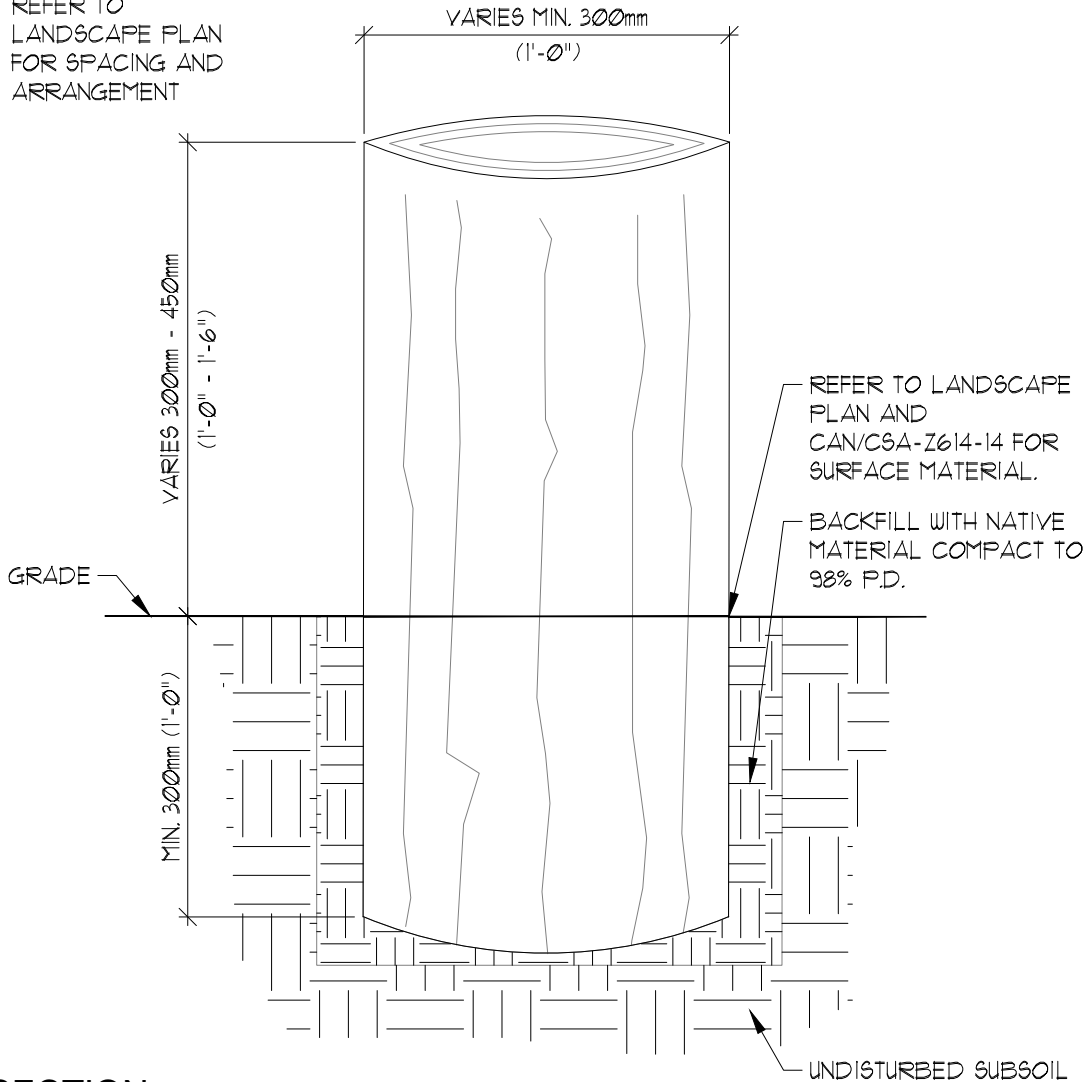
PLAN VIEW - BOARDS



ELEVATION A-A

ELEVATION B-B

REFER TO
LANDSCAPE PLAN
FOR SPACING AND
ARRANGEMENT



SECTION

NOTES:

1. CONTRACTOR TO REFER TO ALL SPECIFICATIONS.
2. CONTRACTOR TO SUPPLY AND INSTALL LOGS.
3. VERTICAL LOGS AS INDICATED ON PLANS ARE SCHEMATIC ONLY, EXACT PLACEMENT TO BE COMPLETED UNDER THE DIRECT SUPERVISION OF THE LANDSCAPE ARCHITECT.
4. REFER TO LANDSCAPE PLAN FOR SPACING AND ARRANGEMENT.
5. LOGS TO BE CUT CLEANLY AND WITH A LEVEL SURFACE.
6. LOGS TO BE INSTALLED PLUMB AND VERTICAL.
7. CONTRACTOR TO ENSURE NO SHARP EDGES, CORNERS, OR OBJECTS.
8. LOGS TO BE OF OAK, ASH, HARD MAPLE OR BEECH SPECIES, OR APPROVED ALTERNATE.
9. ALL SELECTED LOGS TO BE APPROVED BY LANDSCAPE ARCHITECT.

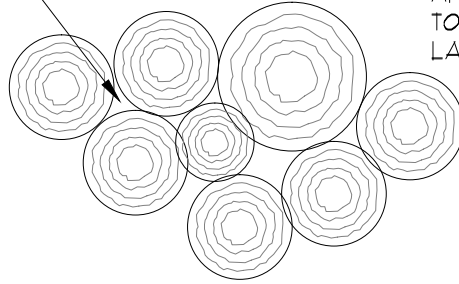
STANDARD UPRIGHT LOG DETAIL

N.T.S.

MAX. DISTANCE OF 25mm (1") BETWEEN ADJACENT LOGS. GAPS TO BE FILLED WITH PLAY SAND. - NO GAPS PREFERRED

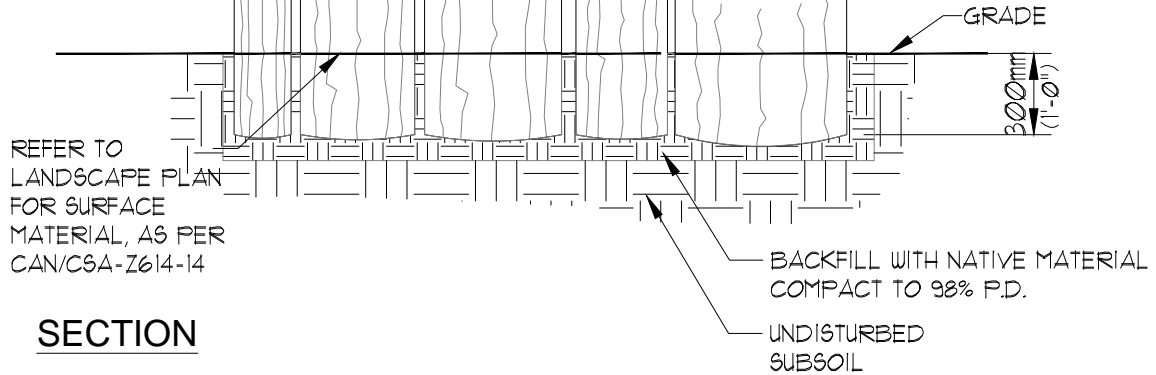
ARRANGEMENT OF LOGS TO VARY - REFER TO LANDSCAPE PLAN

PLAN



REFER TO CHART BELOW FOR MAX. AND MIN. HEIGHTS

REFER TO CHART BELOW FOR MAX. ELEVATION CHANGE



SECTION

LOG DIMENSION CHART

AGE GROUP	MIN. LOG DIA.	MAX. LOG HT. ABOVE GRADE	MAX. SPACING BTW/ ADJ. LOGS	MAX. ELEV. DIFF. BTW/ ADJ. LOGS
18mo - 30mo (TODDLER)	450mm (18")	300mm (12")	25mm (1")	75mm (3")
31mo - 4yr (PRE-SCHOOL)	450mm (18")	350mm (14")	25mm (1")	100mm (4")
4yr+ (KINDERGARDEN)	450mm (18")	450mm (18")	25mm (1")	150mm (6")

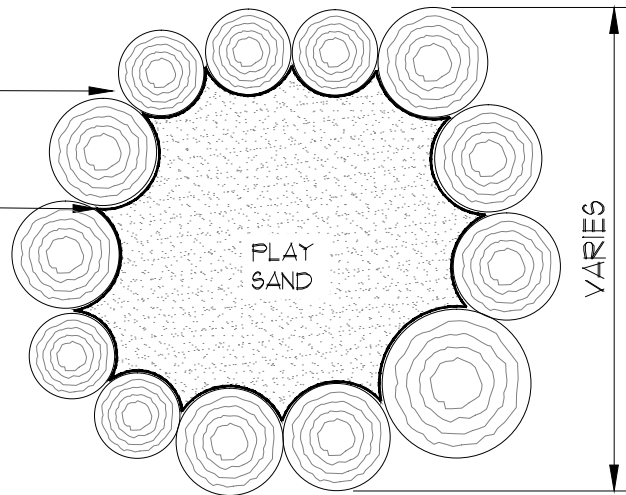
NOTES:

1. CONTRACTOR TO REFER TO ALL SPECIFICATIONS.
2. CONTRACTOR TO SUPPLY AND INSTALL LOGS.
3. VERTICAL LOGS AS INDICATED ON PLANS ARE SCHEMATIC ONLY, EXACT PLACEMENT TO BE COMPLETED UNDER THE DIRECT SUPERVISION OF THE LANDSCAPE ARCHITECT.
4. LOGS WILL VARY IN LENGTH AND DIAMETER, REFER TO CHART FOR SPECIFICATIONS
5. LOGS ARE TO BE BURIED 300mm (1'-0") BELOW GRADE.
6. LOGS TO BE CUT CLEANLY AND WITH A LEVEL SURFACE.
7. LOGS TO BE INSTALLED PLUMB AND VERTICAL.
8. MAX. HEIGHT AND MIN. DIAMETER OF LOGS SPECIFIED IN ABOVE CHART.
9. CONTRACTOR TO ENSURE NO SHARP EDGES, CORNERS, OR OBJECTS.
10. LOGS TO BE OF OAK, ASH, HARD MAPLE, OR BEECH SPECIES, OR APPROVED ALTERNATE.
11. ALL SELECTED LOGS TO BE APPROVED BY LANDSCAPE ARCHITECT.
12. ALL WORKMANSHIP TO BE IN ACCORDANCE TO CAN/CSA-Z614-14.

PLACE ADJACENT LOGS IN TIGHT FORMATION TO AVOID GAPS. MAX. GAPS OF 25mm (1")

FABRIC LINER MUST BE FREE OF HOLES AND RIPS, AND PLACED SNUG AGAINST LOGS

REFER TO LANDSCAPE PLAN FOR EXACT SIZE, AND LAYOUT



PLAN

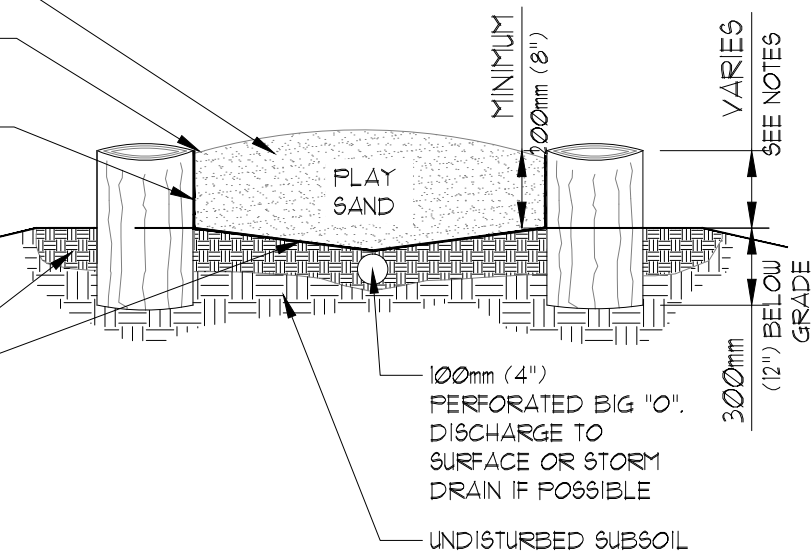
PLAY SAND AS PER CAN/CSA-Z614-14
FILL PLAY SAND TO 50mm (2") BELOW TOP OF LOGS

NON WOVEN GEO-TEXTILE FILTER W/ MIN. 300mm (12") OVERLAP IF SEAM IS REQUIRED

POSITIVE DRAINAGE

BACKFILL WITH NATIVE MATERIAL, COMPACT TO 98% P.D.

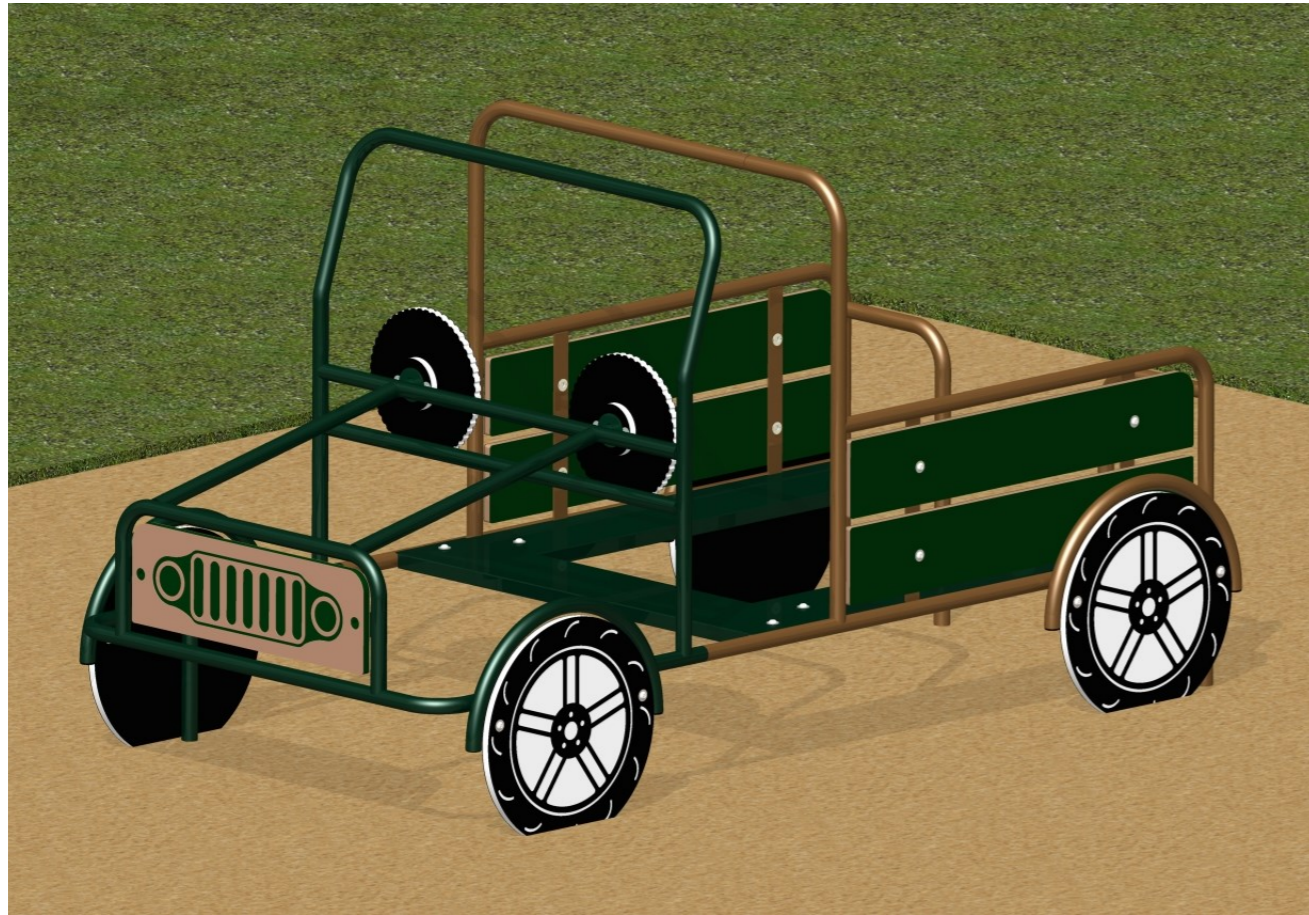
5% SLOPE



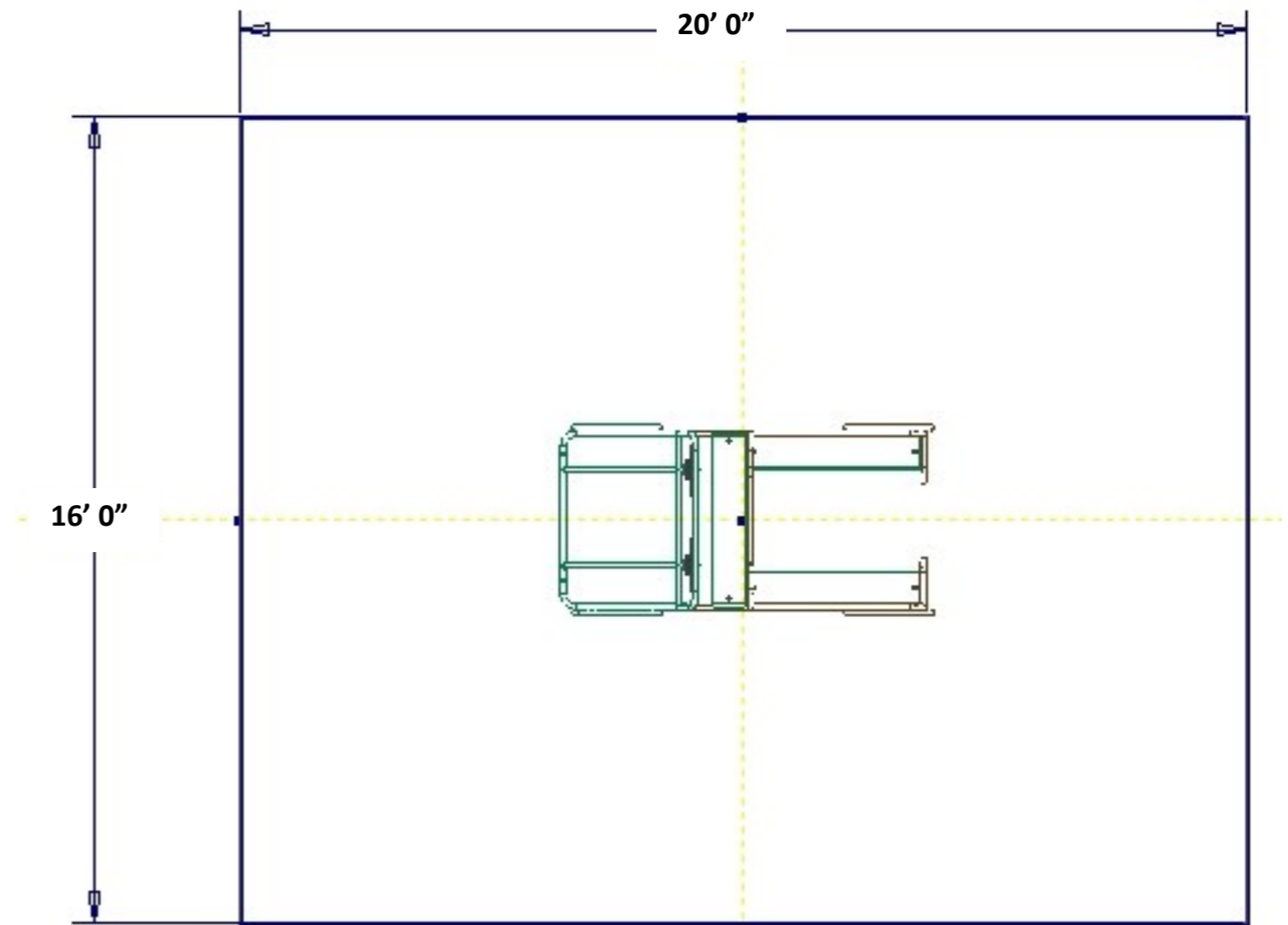
SECTION

NOTES:

1. CONTRACTOR TO REFER TO ALL SPECIFICATIONS.
2. CONTRACTOR TO SUPPLY AND INSTALL ALL MATERIALS AS NOTED ABOVE.
3. ARRANGEMENT AS INDICATED ON PLAN IS SCHEMATIC ONLY, EXACT PLACEMENT TO BE COMPLETED UNDER THE DIRECT SUPERVISION OF THE LANDSCAPE ARCHITECT.
4. LOGS TO VARY IN DIAMETER, VARYING FROM MIN. OF 300mm (12") TO MAX. OF 500mm (20").
5. LOGS TO BE INSTALLED AT VARYING HEIGHTS AT A RANGE OF 300mm (12") ABOVE GRADE TO 400mm (16") ABOVE GRADE.
6. CONTRACTOR TO ENSURE THAT LOGS ARE INSTALLED IN TIGHT FORMATION TO REDUCE GAPS.
7. LOGS TO BE INSTALLED VERTICAL AND PLUMB WITH CLEANLY CUT TOP SURFACES TO A DEPTH OF 300mm (12") BELOW GRADE.
8. LOGS TO BE OF OAK, ASH, HARD MAPLE, OR BEECH SPECIES OR APPROVED ALTERNATE.
9. CONTRACTOR TO ENSURE NO SHARP EDGES, CORNERS, OR OBJECTS.
10. CONTRACTOR TO PROVIDE POSITIVE DRAINAGE WHERE POSSIBLE.
11. QUALITY OF SAND TO BE PLAY SAND AS PER CAN/CSA-Z614-14, FREE OF DIRT AND DEBRIS, FILLED TO 2" BELOW TOP OF LOWEST LOGS.



IMAGINATIVE PLAY TRUCK



SITE PLAN

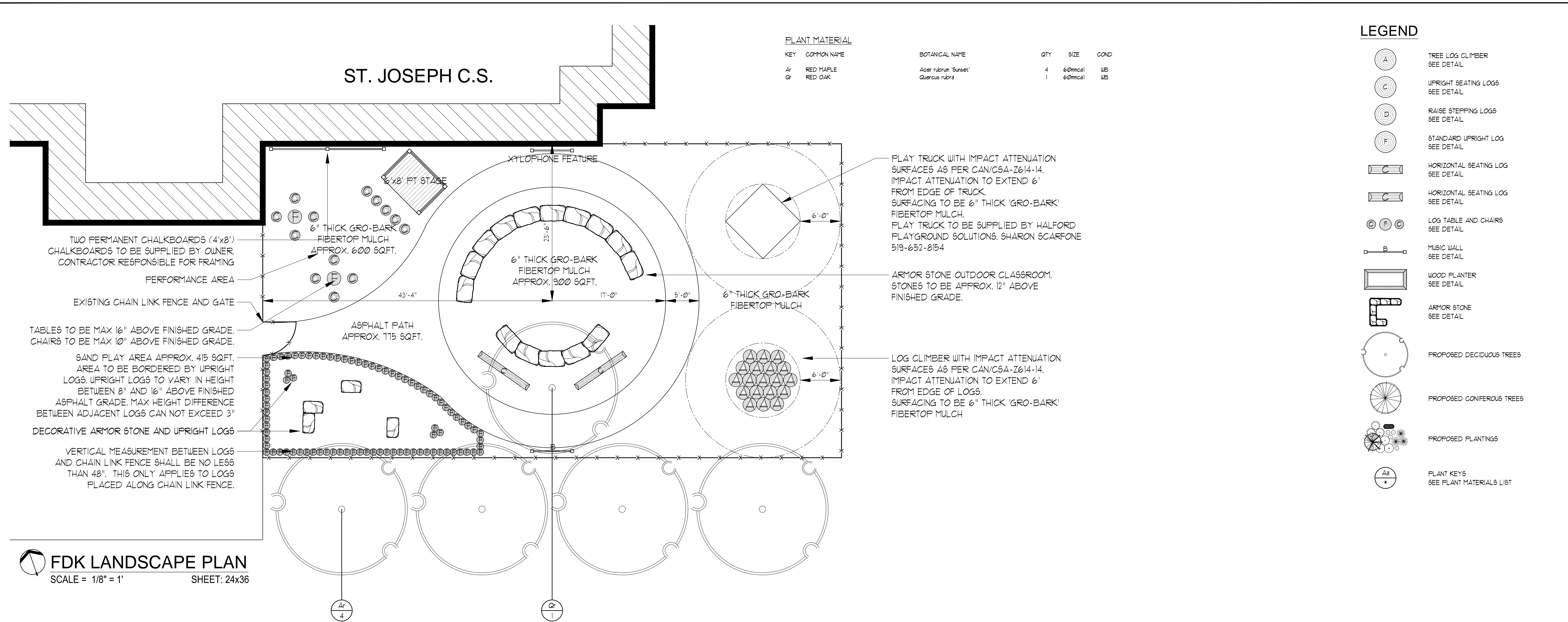
ST JOSEPH CATHOLIC SCHOOL - PROPOSED SITE PLAN



Project ID: St. Joseph Catholic School
 Design ID: SJCS-A-FP-0
 Date: 21 April 2015
 Designer: Sharon Scarfone

CSA Age Category: 18 mos. to 12 yrs
 Use Zone Area: 320 sq.ft.
 Use Zone Perimeter: 72 lin.ft.
 CSA Fall Height: 4'-0" max.





KEY MAP

N.T.S.

ST. CLAIR CATHOLIC DISTRICT SCHOOL BOARD

RON KOUDYS LANDSCAPE ARCHITECTS INC.

ALL DRAWINGS REMAIN THE PROPERTY OF THE LANDSCAPE ARCHITECT AND SHALL NOT BE REPRODUCED OR REUSED WITHOUT THE LANDSCAPE ARCHITECTS WRITTEN PERMISSION.

THIS DRAWING SHALL NOT BE USED FOR CONSTRUCTION OR TENDER PURPOSES UNLESS SIGNED AND DATED BY RONALD H. KOUDYS, O.A.L.A. C.S.L.A., LANDSCAPE ARCHITECT, LONDON, ONTARIO (519) 667-3322.

Ronald H. Koudys, O.A.L.A. C.S.L.A. DATE

DATE	DESCRIPTION	No.
APR 30/15	ISSUED FOR REVIEW (QUOTES)	4
APR 20/15	DRAFT RE-ISSUED FOR REVIEW	3
MAR 05/15	DRAFT RE-ISSUED FOR REVIEW	2
FEB 18/15	DRAFT ISSUED FOR REVIEW	1

PLOTTING INFORMATION:
PLOTTED DATE: APRIL 2015
PLOTTED SCALE: 1/1

PROJECT TITLE:
634
ST. JOSEPH C.S.
535 BIRCHBANK DRIVE
CORUNNA, ON, N0N 1G0

DRAWING TITLE:
LANDSCAPE PLAN

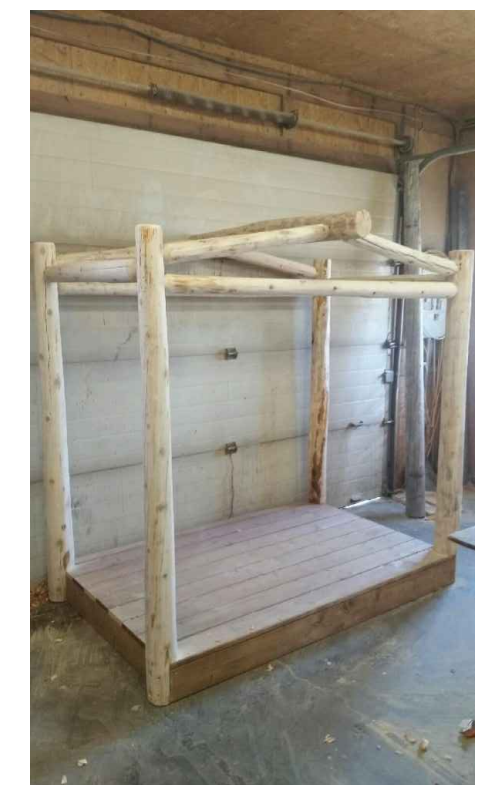
DATE: FEBRUARY 2015	SCALE: AS NOTED	DRAWING No. L-1
DRAWN: RKL, A, Inc.	CHECKED BY: RJK	
PROJECT No. 15-110 L1-C		



GRAPHIC REPRESENTATION OF LOG CLIMBER



GRAPHIC REPRESENTATION OF TABLE AND CHAIRS



GRAPHIC REPRESENTATION OF STAGE. (4x6' SHOWN)



GRAPHIC REPRESENTATION OF SAND PLAY AREA